



Leighton and Associates, Inc.  
A LEIGHTON GROUP COMPANY

January 15, 2021

Project No. 12998.001

Coronado Cays Homeowners Association  
505 Grand Caribe Causeway  
Coronado, California 92118

Attention: Mr. Sergio Gonzalez

Subject: Concrete Testing Report  
Parking Structure  
2 Montego Court  
Coronado, California

This report documents completed concrete coring and testing services performed by Leighton & Associates, Inc. to evaluate the condition of the existing parking structure at 2 Montego Court in Coronado, California. Our field work, performed on January 5, 2021, included the following services:

- Prior to coring, ground penetrating radar was performed to identify existing post-tension tendons and rebar within the concrete.
- Obtain six 3x6-inch concrete cores for compressive strength testing in accordance with ASTM C42.
- Obtain six 2x4-inch concrete cores for Acid Soluble Chloride testing in accordance with ASTM C1152.

The locations of the cores are shown in the attached Figure 1, Concrete Core Location Map. The 3-inch diameter cores are labeled 1a through 6a and the adjacent 2-inch diameter cores are labeled 1b through 6b. The results of the concrete compression testing are provided in Appendix A and the results of the chloride testing are provided in Appendix B.

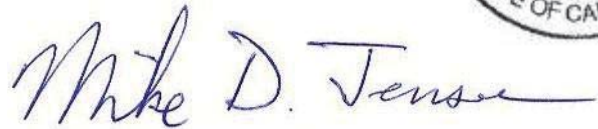
If you have any questions regarding this letter, please do not hesitate to contact this office. We appreciate this opportunity to be of service.

Respectfully submitted,

LEIGHTON & ASSOCIATES, INC.



Nick Tracy, PE, GE  
Associate Engineer  
(858) 300-8499, [ntracy@leightongroup.com](mailto:ntracy@leightongroup.com)

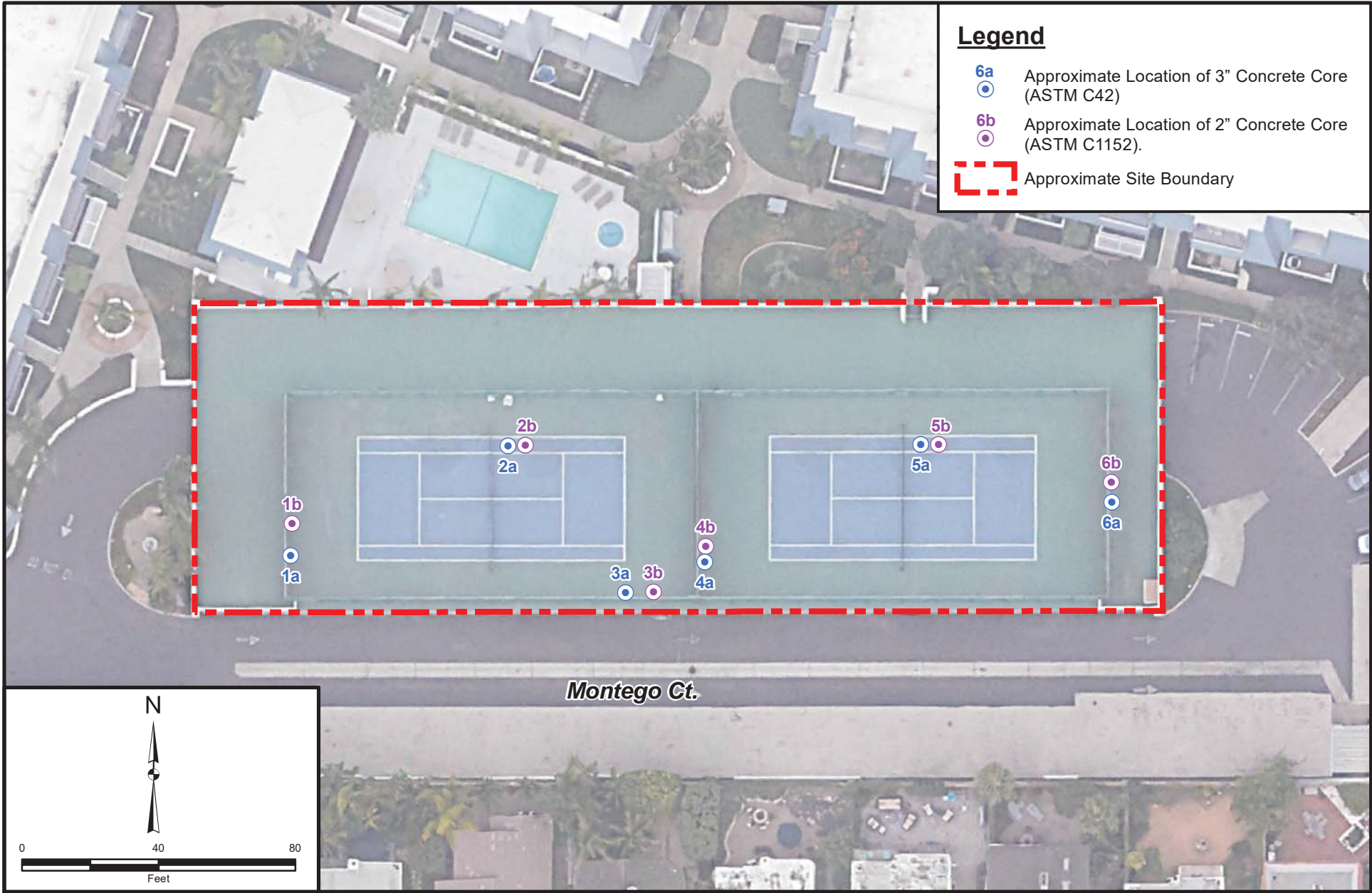


Mike Jensen, CEG  
Associate Geologist  
(858) 300-8494, [mjensen@leightongroup.com](mailto:mjensen@leightongroup.com)

Distribution: Addressee via email

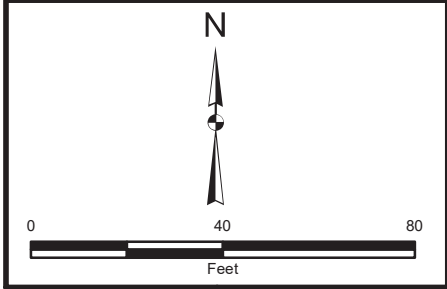
Attachments: Figure 1 – Concrete Core Location Map  
Appendix A – Compression Test Results (ASTM C42)  
Appendix B – Chloride Test Results (ASTM C1152)

Distribution: (1) Addressee (PDF only)



**Legend**

- 6a Approximate Location of 3" Concrete Core (ASTM C42)
- 6b Approximate Location of 2" Concrete Core (ASTM C1152).
- Approximate Site Boundary



Project: 12998.001	Eng/Geol: NT
Scale: 1" = 40'	Date: January 2021
Base Map: Google Earth, 2021. Thematic Information: Leighton Author: (mmurphy)	

**CONCRETE CORE LOCATION MAP**  
2 Montego Court  
Coronado, California

Figure 1

Leighton

APPENDIX A  
COMPRESSION TEST RESULTS



**COMPRESSIVE STRENGTH TEST OF CORES PER ASTM C42**

**Date:** 1/7/2021  
**Client:** Coronado Cays Homeowners Association  
 505 Grand Caribe Causeway  
 Coronado, CA 92118  
**Project:** Coronado Cays Concrete Coring  
 2 Montego Court  
 Coronado, CA  
**Permit No.:**  
**Attn:** Sergio Gonzalez  
**Report No.:** 75- 12998.001

**FIELD TEST DATA**

**Sample Source:** PARKING STRUCTURE  
**Core Type:** Concrete  
**Supplier:**  
**Date Poured:**  
**Date Received:** 1/5/2021  
**Date Cored:** 1/5/2021  
**Specified Strength (psi):**  
**Sampled by:** Nick Tracy  
**Mix Design:**

**LABORATORY TEST DATA**

Specimen ID No.	Age, Days	Date Tested	Diameter, in.	Height as tested, in.	Area, sq. in.	Max. Comp. Load, lb.	Gross Comp. Strength, psi	H/D Ratio	Correction Factor	Net Comp. Strength, psi
1199		1/7/2021	2.76	4.83	5.980	17660	2953	1.75	0.98	2890
1200		1/7/2021	2.76	4.97	5.980	15160	2535	1.80	0.98	2480
1201		1/7/2021	2.76	4.94	5.980	18930	3166	1.79	0.98	3100
1202		1/7/2021	2.76	5.75	5.980	18320	3064	2.08	1.00	3060
1203		1/7/2021	2.76	5.50	5.980	11710	1958	1.99	1.00	1960
1204		1/7/2021	2.76	4.33	5.980	14970	2503	1.57	0.97	2430

**Result** For informational use only.

Respectfully submitted,  
Leighton Consulting, Inc.

Roderick Marcia  
Reg. Professional Engr. No. C70150  
Registration Exp. 09/30/2022

**Comments:**

Sample ID# 1199 = 1A, Sample ID# 1200 = 2A,  
Sample ID# 1201 = 3A, Sample ID# 1202 = 4A,  
Sample ID# 1203 = 5A, Sample ID# 1204 = 6A  
Age of concrete unknown.

APPENDIX B  
CHLORIDE TEST RESULTS



### ASTM C 1152 Acid-Soluble Chloride Ion Contents (PPM)

**Client:** Leighton & Associates, Inc.  
 3934 Murphy Canyon Road, Suite B205  
 San Diego, CA 92123-4425  
 858.292.8030

**Date Received:** 01/07/21  
**Date Tested:** 01/11/21  
**Date Reported:** 01/12/21

**Attention:** Nick Tracy

**TCG Project No.** 21003  
**Job Description:** 12998.001

**Sample Description:** Six (6) 1-5/8" diameter cores were received for testing from our client. The cores were cut at the depth increments listed below. All samples were dried and crushed to ensure all material passed a #20 Sieve. The Chloride data is reported by mass of sample.

**TCG Technician:** MW

Sample ID	Depth Increments in Inches					
	0 to 1		1 to 2		2 to 3	
	Chloride Content ppm	Chloride content (% by mass of sample)	Chloride Content ppm	Chloride content (% by mass of sample)	Chloride Content ppm	Chloride content (% by mass of sample)
1B	1120	0.112%	527	0.053%	162	0.016%
2B	688	0.069%	321	0.032%	132	0.013%
3B	942	0.094%	453	0.045%	262	0.026%
4B	1911	0.191%	976	0.098%	694	0.069%
5B	594	0.059%	486	0.049%	348	0.035%
6B	775	0.078%	477	0.048%	131	0.013%

**Scale:** Mettler Toledo Mod. AB204-S 1119211558  
**Titration:** Mettler Toledo Mod. T-50 B409347785  
**Carousel:** Mettler Toledo Rondo 2A 5126186242

Reviewed By;

Larry Wachowski  
 Laboratory Manager