

## **APPENDIX G**

### **Trinidad Village**



APPROX. SCALE: 1"=100'

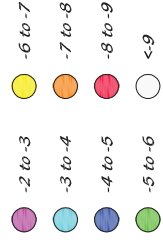
SOURCE: GOOGLE INC., JUNE 9, 2021  
GOOGLE EARTH [SOFTWARE]  
IMAGERY DATE: 11-17-2018  
AVAILABLE FROM: <http://www.google.com/>



**LEGEND**

2021 BERM SURVEY

Elevation Datum:  
MSL, ft



**LEGEND (2021 BULKHEAD SURVEY)**

- 8.2 • APPROXIMATE LOCATION & ELEVATION (MSL) OF BERM MEASUREMENT
- 7.2 • BERM ELEVATION FALLING WITHIN CAUTIONARY ZONE
- SD — STORM DRAIN
- T TALLS OBSERVED AT PANEL JOINT DURING UNDERWATER INSPECTION

AREA	SHEET PILE LENGTH	CAUTIONARY	SERIOUS
B	20.0 FT (including Cap)	-7 TO -8 MSL	< -8 MSL

Elevation of top of Pile Cap: 7.1' MSL

If present, elevation of architectural cap varies.

Field Survey Dates: May 18, 19, & 20, and June 25, 2021



TERRACOSTA CONSULTING GROUP 3885 MURPHY CANYON ROAD, SUITE 200 SAN DIEGO, CA 92131 (858) 973-8800	FIGURE NUMBER <b>G-1</b>
PROJECT NAME CORONADO CAYS BULKHEADS	PROJECT NUMBER T2904.070.001

**TRINIDAD VILLAGE**

**CORONADO CAYS BULKHEADS**  
**Port of Spain (Trinidad Village)**  
**Project Number T2904.070.001**

ADDRESS / LOCATION	BERM ELEV. (MSL)	OBSERVATION / COMMENTS
<i>Port of Spain bulkhead has unusual utilities attached right under pile cap</i>		
10' S of GW Lot 97	-3.7	
N of GW Lot 97	-4.5	
10' S of Lots 95/97 PL	-4.4	
PL at Lots 95/97	-4.3	
10' S of Lots 93/95 PL	-4.6	
PL of Lots 93/95	-4.8	
S of GW Lot 93	-5.2	
20' S of GW Lot 91	-5.3	
10' S of GW Lot 91	-5.1	
GW Lot 91	-5.4	
40' S of PL Lots 87/89	-5.5	
33' S of PL Lots 87/89	-5.5	
20' S of PL Lots 87/89	-5.6	
10' S of PL Lots 87/89	-5.9	
PL at Lots 87/89	-5.9	
Lot 87	-6.0	1" panel separation, minor extruding
Lot 85	-5.9	Minor vertical cracking on pile cap
HOA/Lot 85 PL		Storm drain outlet, spalling noted around outlet
HOA	-5.7	Spalling on panel 3 joint N of GW 85
Lot 81	-5.5	
between lot 81 and 79	-5.7	
Lot 79	-5.9	
between GW 79&77	-6.4	
GW Lot 77	-6.0	Minor spalling at panel joint
between GW 77&75	-5.5	1 panel north of GW 77 - rust and major cracking
between GW 75&73	-5.8	
GW Lot 73	-5.2	Minor horizontal cracking
between GW 73&71	-4.9	Minor horizontal cracking
GW Lot 71	-4.6	
between GW 71&67	-4.7	Separation at storm drain outlet - needs grouting
South of 67 GW		Minor extrusion at drain pipe
GW Lot 67	-4.8	Minor horizontal cracking
Between GW 67&65	-4.9	Minor horizontal cracking on pile cap
GW Lot 65	-4.8	
between GW 65&63	-4.9	
GW Lot 63	-4.8	
Between GW 63&61	-4.8	Separation at panel joint north of GW
GW Lot 61	-4.8	
between GW 59&61	-4.9	
GW Lot 59	-5.1	
Lot 57	-4.6	

**CORONADO CAYS BULKHEADS**  
**Port of Spain (Trinidad Village)**  
**Project Number T2904.070.001**

between lot 57&55	-4.3	
GW Lot 55	-4.4	
GW Lot 53	-4.8	
2 panels north of GW 53	-5.6	
4 panels north of GW 53	-5.2	
6 panels north of GW 53	-5.0	6" drain pipe in deteriorating condition
8 panels north from GW 53	-5.4	
10 panels north from GW 53	-5.4	Panel extrusion; spalling at panel joint
12 panels north from GW 53	-5.3	Spalling at panel joint
HOA GW	-5.6	2" Separation at panel joint near corner
Corner of HOA	-5.9	
2 panels north of HOA corner	-5.2	Panel extrusion
4 panels north of HOA corner	-5.0	
6 panels north of HOA corner	-5.2	Extrusion of panel
8 panels north of HOA corner	-5.2	
10 panels north of HOA corner	-5.4	
12 panels north of HOA corner	-5.2	
14 panels north of HOA corner	-5.0	
end of HOA parcel	-5.1	Storm drain outlet at end of HOA parcel; minor separation (could use grout and refurbishing)
Lot 49	-5.3	
Lot 47	-5.4	
Lot 45	-5.7	
Lot 45 N PL	-5.2	
between 43 and 45	-5.0	
Lot 43 N PL	-4.7	
GW Lot 41	-4.6	
GW Lot 39	-4.7	
GW Lot 37	-5.0	
GW Lot 35	-5.4	
GW Lot 33	-5.6	Minor panel extrusion and spalling at panel south of GW
corner between lot 33 & 29	-5.0	Separation between storm drain outlet and panel; spalling at corner. 7th panel from corner has 1" wide joint with 6" wide x 3" high talus pile; no surface settlement observed
GW at Lot 29	-5.2	
lot 27 southside of gangway	-5.2	
Lot 25 GW	-5.2	Rust from joint
GW Lot 23	-5.0	
GW Lot 21	-5.1	
GW Lot 19	-4.7	2 inch tile cap; minor panel extrusion
Lot 13 PL	-5.0	Spalling panel; storm drain outlet located at 2nd panel from S PL of lot 13
GW Lot 13	-4.6	
GW Lot 11	-5.2	
GW Lot 9 S PL	-5.3	Wide joints noted, no soil leakage
GW Lot 9 N PL	-5.1	

**CORONADO CAYS BULKHEADS**  
**Port of Spain (Trinidad Village)**  
**Project Number T2904.070.001**

GW Lot 7	-4.8	
GW Lot 5	-5.2	Wide joints noted, no soil leakage
GW Lot 3 S PL	-6.2	
GW Lot 3 N gangway	-6.7	Significant spalling & rust staining
GW Lot 3 S gangway	-6.0	Significant spalling & rust staining
GW Lot 3	-5.5	Significant spalling & rust staining
Lot 3 N PL	-4.9	Significant spalling & rust staining
Panels 2 thru 6 S from corner		Badly cracked
Panels 4&5 from corner		Panel 4 1" offset but probably built that way due to no cracking in pilecap

# Trinidad Village



Photo 1: Port of Spain, One Panel North of Lot 77 Gangway.  
Rust and major cracking.



Photo 2: Port of Spain, 12 Panels north of Lot 53 Gangway.  
Spalling at panel joint.

# Trinidad Village



Photo 3: Port of Spain, 7<sup>th</sup> Panel North of Lot 29/31 Property Line.  
1-inch joint with 6" w x 3" h talus pile.

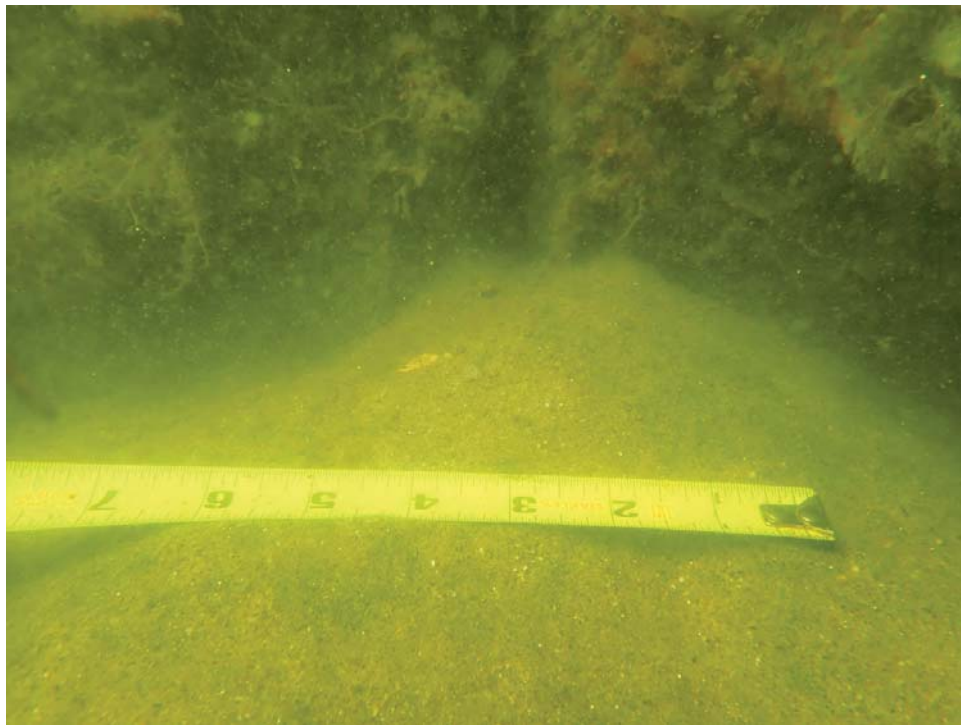


Photo 4: Port of Spain, 7<sup>th</sup> Panel North of Lot 29/31 Property Line.  
1-inch joint with 6" w x 3" h talus pile.

# Trinidad Village



Photo 5: Port of Spain, Lot 3.  
Panels are badly cracked.

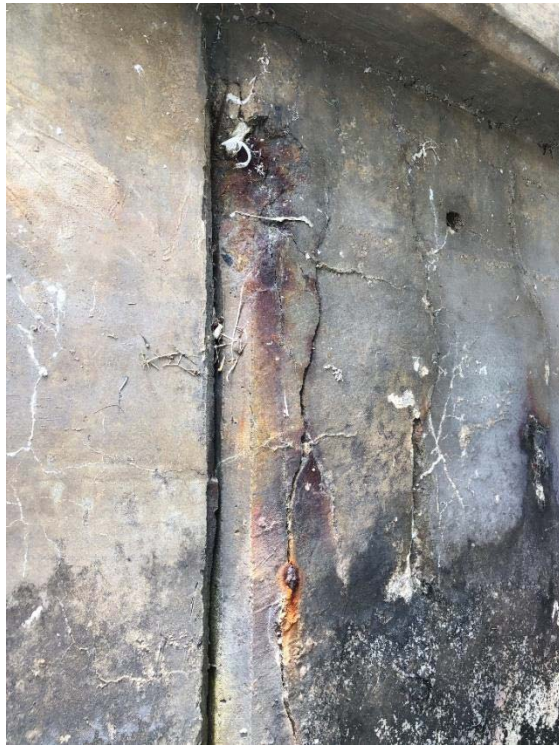


Photo 6: Port of Spain, Lot 3.  
Panels are badly cracked.



# Trinidad Village



Photo 7: Port of Spain, Lot 3.  
Panels are badly cracked.

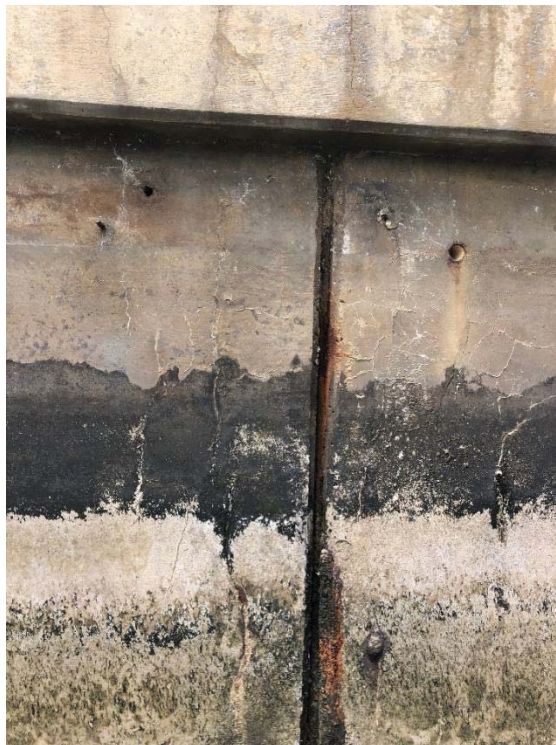


Photo 8: Port of Spain, Lot 3.  
Panels are badly cracked.

# Trinidad Village



Photo 9: Port of Spain, Lot 3.  
Panels are badly cracked.



Photo 10: Port of Spain, Lot 3.  
Panels are badly cracked.

# Trinidad Village



Photo 11: Port of Spain, Lot 3.  
Void under walkway suggests some lost ground.



Photo 12: Port of Spain, Lot 3.  
No obvious rotation of panels.

# Trinidad Village



Photo 13: Port of Spain, Lot 3.  
No obvious rotation of panels.



Photo 14: Port of Spain.  
This bulkhead has unusual utilities attached right under the pile cap.