

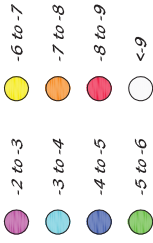
**APPENDIX F**  
**Bahama Village**

Field Survey Dates: May 18, 19, & 20, and June 25, 2021

**LEGEND**

2021 BERM SURVEY

Elevation Datum:  
MSL, ft



APPROX. SCALE: 1"=100'

SOURCE: GOOGLE INC., JUNE 9, 2021  
GOOGLE EARTH [SOFTWARE]  
IMAGERY DATE: 11-17-2018  
AVAILABLE FROM: <http://www.google.com/>



2021 Reading of berm elevation (typ.)

Residence Address (typ.)

**LEGEND (2021 BULKHEAD SURVEY)**

- 5.2 \* APPROXIMATE LOCATION & ELEVATION (MSL) OF BERM MEASUREMENT
- \* POSSIBLE VOID/LOSS OF GROUND OBSERVED DURING SURFACE SURVEY
- 7.2 \* BERM ELEVATION FALLING WITHIN CAUTIONARY ZONE
- SD STORM DRAIN

AREA	SHEET PILE LENGTH	CAUTIONARY	SERIOUS
B	20.0 FT (including Cap)	-7 TO -8 MSL	< -8 MSL

Elevation of top of Pile Cap: 7.1' MSL

TERRACOSTA CONSULTING GROUP 3800 MURPHY CANYON ROAD, SUITE 200 SAN DIEGO, CA 92131 8581 973-8900	FIGURE NUMBER <b>F-1</b>
CORONADO CAYS BULKHEADS	PROJECT NUMBER T2904.070.001

**BAHAMA VILLAGE**

# CORONADO CAYS BULKHEADS

## Catspaw Cape

Project Number T2904.070.001

ADDRESS / LOCATION	BERM ELEV. (MSL)	OBSERVATION / COMMENTS
Lot 91 NW corner	-4.2	
Lot 91 S side GW	-5.2	
Lot 91 S side PL	-6.2	
Lot 89 N side GW	-5.2	
Lot 89 S side GW	-4.2	
Lot 87 N side GW	-4.5	Spalling panel under GW; vertical crack at joint N of GW
Lot 85 S side GW	-4.2	
Lot 83 N side PL	-4.0	
Lot 83 S side GW	-4.2	
Lot 81 N side GW	-3.3	Storm Drain Outlet
E of Public GW GW 1	-3.7	
Lot 79 NW PL	-4.2	
Lot 77 S side GW	-3.7	
Lot 75 W side GW	-4.0	
Lot 73 E side GW	-4.5	
Lot 71 W side GW	-4.1	Crack with rust
Lot 71 E side PL	-4.8	Crack with rust
Lot 69 1 Panel W of GW	-4.7	
Lot 67 E side GW	-4.2	
Lot 67 E PL	-4.5	
Lot 65 E side GW	-4.7	
Lot 63 E PL	-5.3	Panel E of GW severe rust bleeding
Lot 63 E side GW	-4.2	
Lot 61 E side GW	-4.4	
PL at Lots 59/61		Hairline crack and rust staining
Lot 59 W side GW	-4.8	
Lot 59 E PL	-5.0	
Lot 57 W PL	-5.6	
W of Lot 55 - Public GW	-4.9	Storm drain outlet E of GW; rust stains E & W of GW
Lot 55 W GW	-4.7	
Lot 53 GW	-4.8	Deep spall
Lot 53 CL property	-4.2	
Lot 53 E PL	-4.2	
Lot 51 1/3 W of W PL	-4.7	
Lot 51 CL	-5.2	
Lot 49 W 1/3	-4.7	Crack with rust stains right of joint
Lot 49 E 1/3	-5.1	
Lot 49 E PL	-5.4	
Lot 47 CL	-5.4	
Lot 47 E PL	-5.6	
Lot 45 CL	-5.9	
HOA CL W stairs	-6.0	

# CORONADO CAYS BULKHEADS

## Catspaw Cape

Project Number T2904.070.001

HOA W of GW	-5.7	Under GW vertical crack and rust
HOA 1st Pilaster W of W GW	-5.7	
2nd panel S of GW		5" cored hole; inside PVC pipe is crinkled
HOA 1st panel E of Pilaster	-6.1	Sidewalk behind wall has settled 1/2" below top of cap
HOA 15' E of pilaster	-6.6	
25' E of pilaster	-5.3	
35' E of pilaster	-5.7	
55' W of HOA GW near corner	-5.8	
45' W of HOA GW near corner	-6.1	
35' W of HOA GW near corner	-6.0	
25' W of HOA GW near corner	-5.8	Vertical crack in pilaster
HOA 1st pilaster W of GW	-6.4	
HOA W pilaster at GW	-6.1	20' section of sidewalk behind wall has settled 1/2" below top of cap; hollow sound noted indicating possible voids
HOA E pilaster at GW	-5.0	At pileaster vertical crack
HOA 2 panels E of GW	-4.7	5" cored hole with PVC pipe extends beyond hole
HOA corner	-6.2	Vertical cracking
HOA 1/2 panel S of corner	-6.5	Panel cracked
HOA between corner and pilaster	-6.6	
HOA N side GW	-6.4	
S side of GW	-5.8	
2nd panel S of GW	-5.3	
3rd panel S of GW	-5.4	
4th panel S of GW	-5.5	2 vertical cracks right of joint
5th panel S of GW	-5.5	
6th panel S of GW	-5.5	Wide joint 70' S of HOA corner, no talus
7th panel S of GW	-5.7	
8th panel S of GW	-5.7	
9th panel S of GW	-5.2	At pileaster vertical crack, spalling
10th panel S of GW	-4.8	
11th panel S of GW	-4.8	
12th panel S of GW	-5.9	
Lot 43	-5.4	
Lot 41	-5.5	Spalling and vertical crack north of gangway
Lot 39	-4.9	6' long horizontal crack 1/32"
Lot 37	-4.9	
GW Lot 37	-5.0	
between Lots 35&37	-5.0	
GW Lot 35	-5.3	
GW Lot 33	-5.5	Under GW vertical crack
GW Lot 31	-5.0	
Between Lots 29&31	-5.0	
GW Lot 29	-4.5	
GW Lot 27	-4.9	
GW Lot 25	-5.2	Spalling N of GW

# CORONADO CAYS BULKHEADS

## Catspaw Cape

Project Number T2904.070.001

GW Lot 23	-5.1	
GW Lot 21	-5.4	
GW Lot 19	-4.5	
GW Lot 17	-4.9	
GW Lot 15	-5.1	
GW between Lots 13&15	-5.3	Storm drain outlet; rust and minor vertical cracking
GW Lot 13	-5.5	Pile cap broken off, spalling; 1" opening at joint, no talus
GW Lot 11	-5.5	Wide joint, rust staining
GW Lot 9	-4.7	
GW Lot 7	-5.0	Pipe 5 panels from lot 7 GW; sides are spalling and deteriorating
GW Lot 5	-5.4	Major vertical cracking 3rd panel from lot 5 GW
10' S of GW 3	-4.9	
Panel N of GW	-4.3	Rust staining, spalling, vertical cracks
1st panel S of GW	-4.3	
2nd panel S of GW	-4.5	
3rd panel S of GW	-4.8	Vertical cracks
2nd panel N of GW Lot 1	-4.4	Delamination and cracks, spalling under pilecap
N of GW Lot 1	-3.6	Cracking & spalling
South Corner	-3.3	5" dia core hole blocked

# Bahama Village

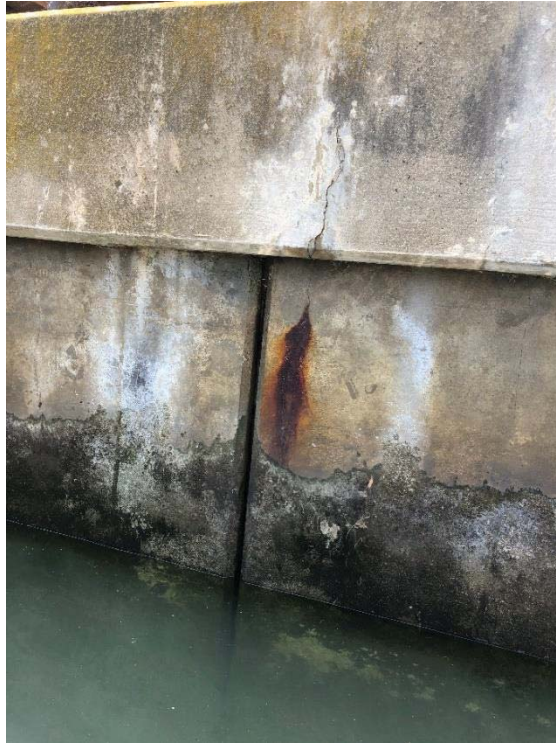


Photo 1: Catspaw Cape, first panel south of Lot 87 gangway.  
Rust bleeding.



Photo 2: Catspaw Cape, first panel south of Lot 63 gangway.  
Badly rust bleeding.

# Bahama Village



Photo 3: Catspaw Cape, west of Lot 55, public gangway.  
Rust stains east and west of gangway.

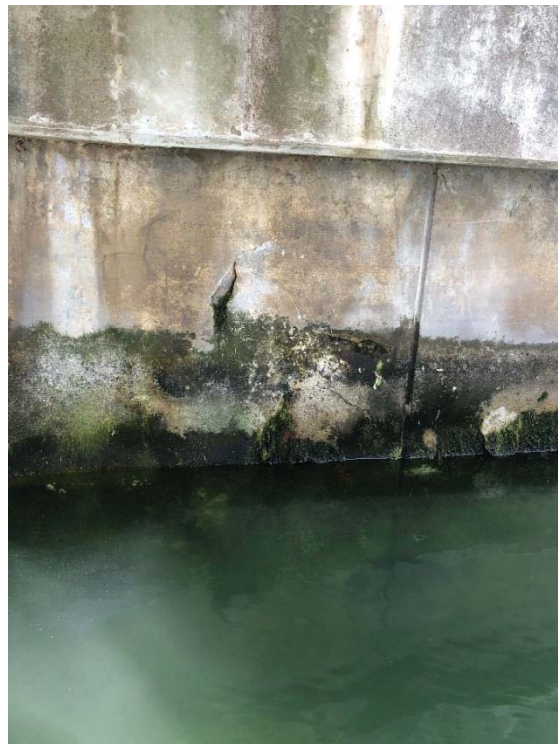


Photo 4: Catspaw Cape, Lot 53 gangway.  
Deep spall.

# Bahama Village



Photo 5: Catspaw Cape, Lot 49.  
Crack with rust stains right of joint.



Photo 6: Voids detected under sidewalk from east side of stairs to approx.. 20 feet west of stairs. Also randomly detected voids adjacent to the bulkhead in other locations along the north bulkhead.



# Bahama Village



Photo 7: Note two bulkhead penetrations below area where voids were detected.



Photo 8: Catspaw Cape, CCHOA west of gangway.  
Under gangway, vertical crack and rust.

# Bahama Village



Photo 9: Catspaw Cape, second panel south of gangway.  
5-inch cored hole; inside PVC pipe is crinkled.



Photo 10: Catspaw Cape, Gangway between Lots 13 and 15.  
Rust and minor vertical cracking.

# Bahama Village



Photo 11: Catspaw Cape, Lot 13 gangway.  
Pile cap broken off, spalling; 1-inch opening at joint, no talus.

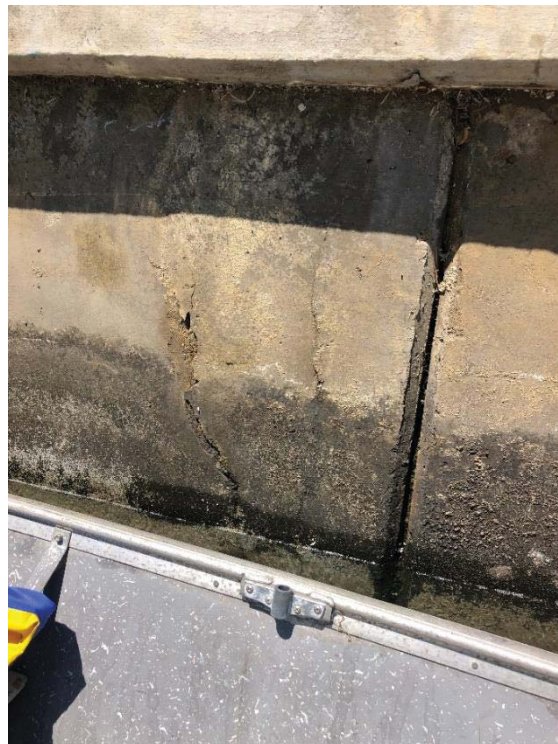


Photo 12: Catspaw Cape, third panel south of gangway.  
Vertical cracks.

# Bahama Village



Photo 13: Catspaw Cape.  
Delamination and cracks, spalling under pile cap.



Photo 14: Catspaw Cape, Lot 1, north of gangway.  
Cracking and spalling.