

Kingston Court



Photo 1: Kingston Court, Lots 3-13, 32 feet south of northern corner. Vertical crack bleeding rust.

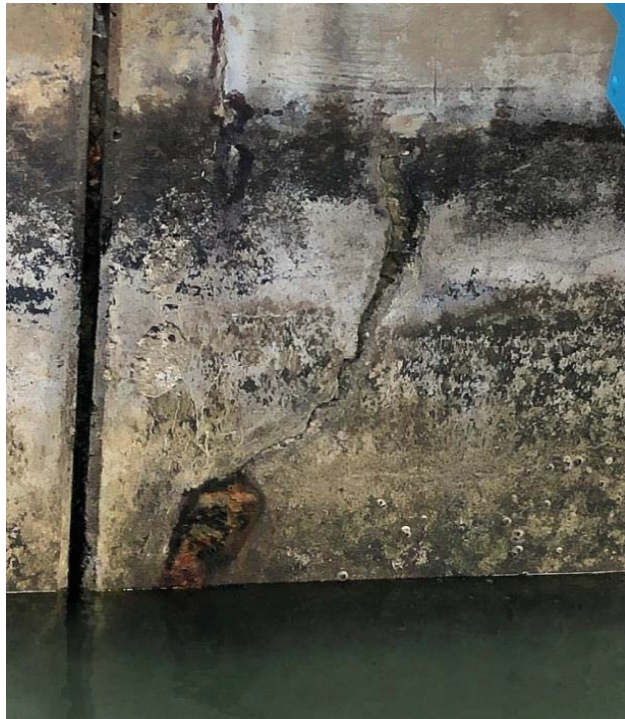


Photo 2: Kingston Court, panel under second gangway.

Kingston Court



Photo 3: Kingston Court E, talus pile (9" w x 3" h) at 1-inch-wide joint south of Gangway 4.



Photo 4: Kingston Court S (end of east cul-de-sac), panel under second gangway. Soil on top of grout (grout breach).

Kingston Court



Photo 5: Kingston Court, panel under second gangway.
Two diagonal tie rods have been installed.



Photo 6: Kingston Court S, talus pile (12" w x 6" h)
at 1-inch-wide joint west of Gangway 11.

Kingston Court



Photo 7: Kingston Court, fifth panel from west end (southern corner).
Significant cracking.



Photo 8: West of Gangway 16.
Void detected under concrete patch in sidewalk on southerly end of Kingston Court.

Kingston Court

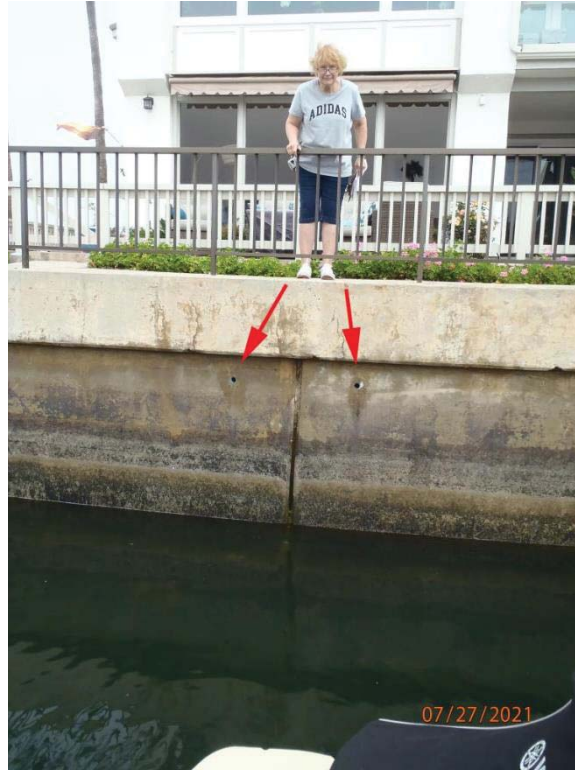


Photo 9: West of Gangway 16.
Note two bulkhead penetrations located below the concrete patch.



Photo 10: Kingston Court W.
Small talus pile at 1.25-inch-wide joint 85 feet south of Gangway 17.

Kingston Court

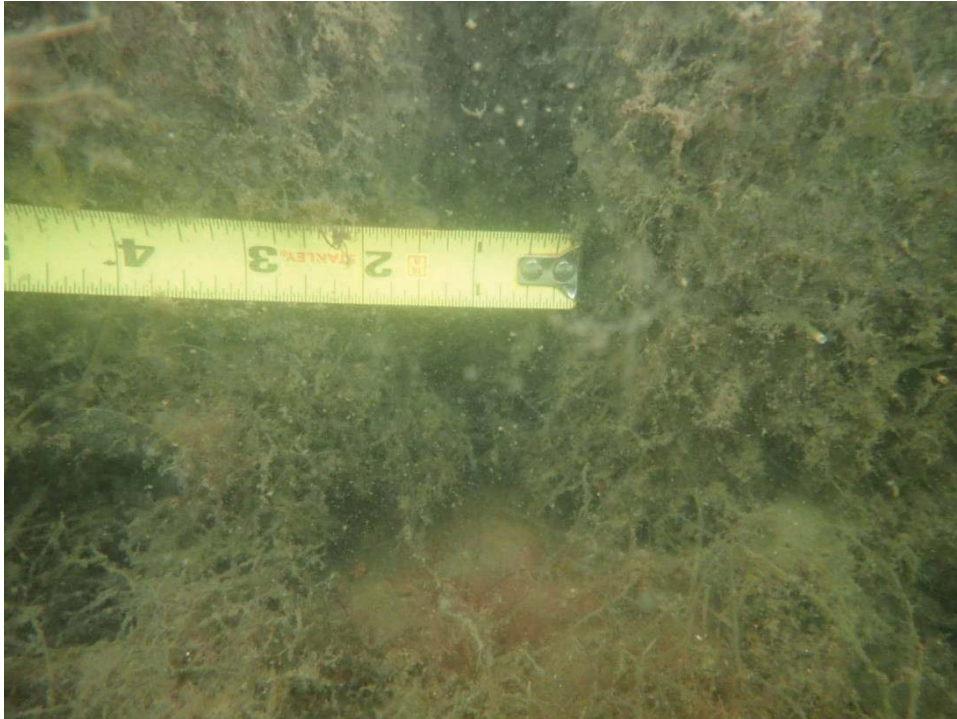


Photo 11: Kingston Court W.
Small talus pile covered by growth at 1.25-inch-wide joint north of Gangway 19.



Photo 12: Note numerous sections of sidewalks show evidence of settlement adjacent to the bulkheads. Gangway 20 in background.

Kingston Court



Photo 13: Just North of Gangway 21.

Many electrical panels have void spaces, allowing surface water to infiltrate between sidewalk and bulkhead.



Photo 14: Kingston Court W.

Talus pile (12" w x 3" h) at 1-inch-wide joint south of Gangway 24.

Kingston Court

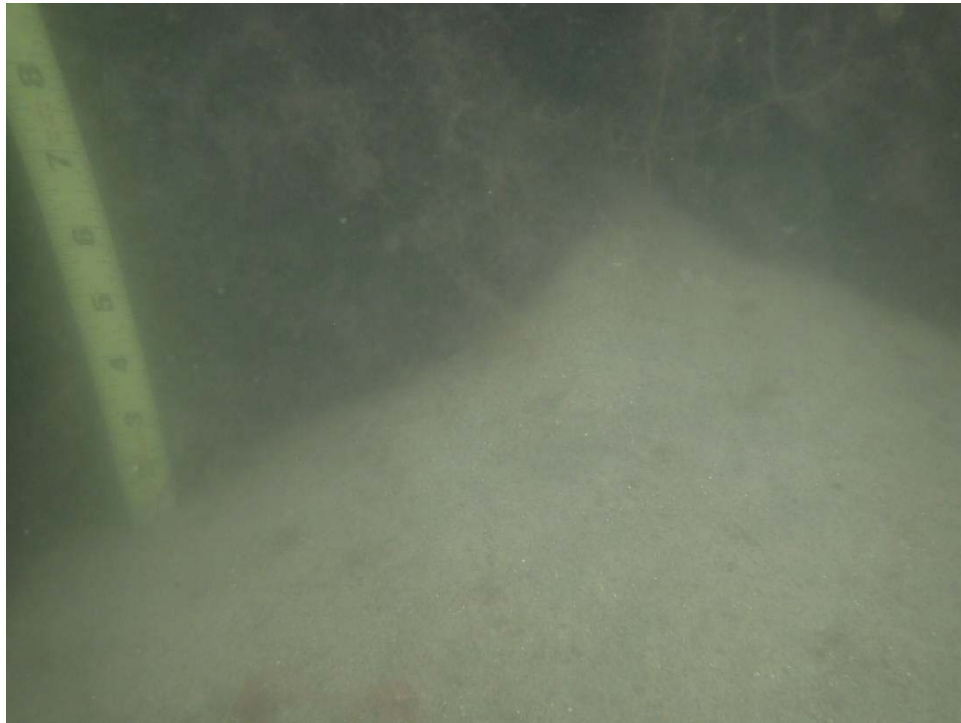


Photo 15: Kingston Court W.
Talus pile (12" w x 5" h) at 1-inch-wide joint south of Gangway 26.