

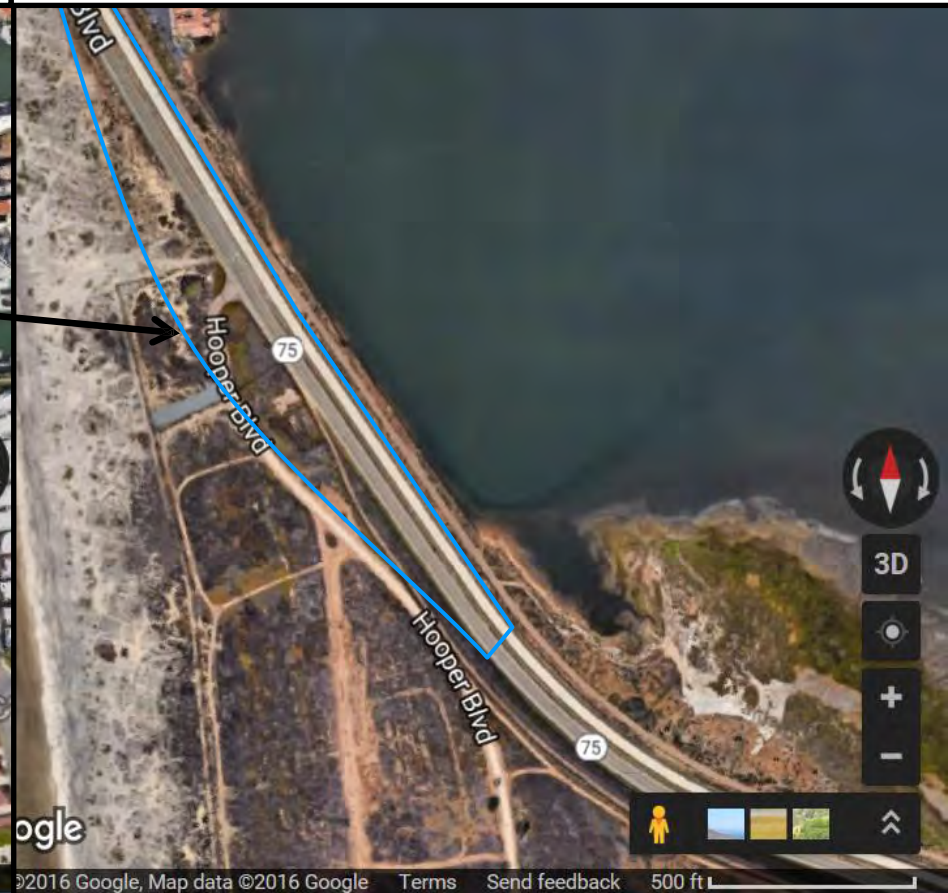


Coastal Campus Entry Control Point SR-75 Intersection Planning Considerations

Existing Coronado Cays Blvd. SR-75
Grade Separated Intersection

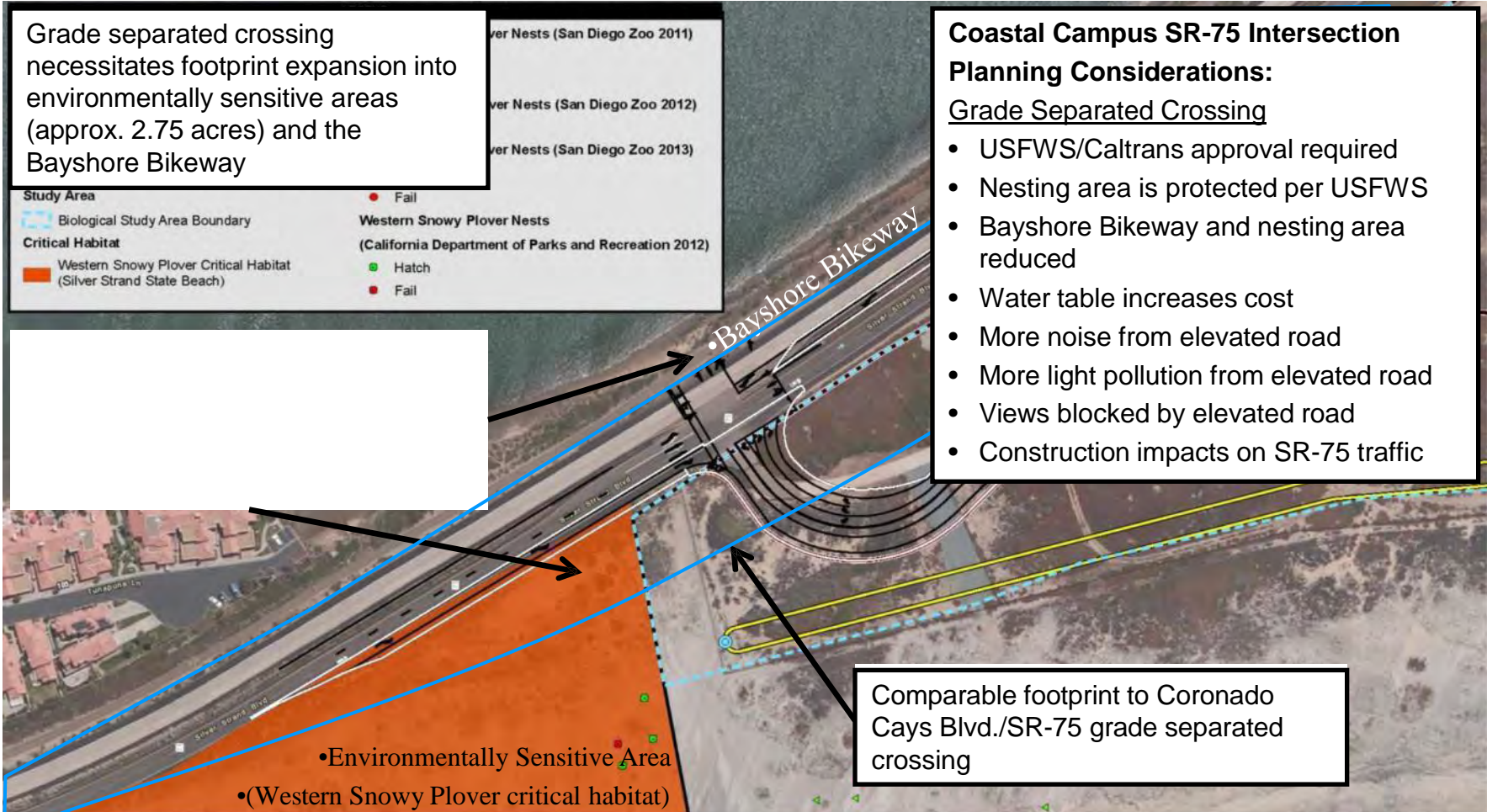


Existing SSTC-S/SR-75 Intersection





Coastal Campus Entry Control Point SR-75 Intersection Planning Considerations



Grade separated crossing necessitates footprint expansion into environmentally sensitive areas (approx. 2.75 acres) and the Bayshore Bikeway

Study Area	● Fail
Biological Study Area Boundary	Western Snowy Plover Nests (California Department of Parks and Recreation 2012)
Critical Habitat	● Hatch
Western Snowy Plover Critical Habitat (Silver Strand State Beach)	● Fail

Coastal Campus SR-75 Intersection Planning Considerations:

Grade Separated Crossing

- USFWS/Caltrans approval required
- Nesting area is protected per USFWS
- Bayshore Bikeway and nesting area reduced
- Water table increases cost
- More noise from elevated road
- More light pollution from elevated road
- Views blocked by elevated road
- Construction impacts on SR-75 traffic

Comparable footprint to Coronado Cays Blvd./SR-75 grade separated crossing

• Environmentally Sensitive Area
• (Western Snowy Plover critical habitat)



Naval Base Coronado Coastal Campus Temporary Utility Pole Alignment





Coastal Campus Entry Control Point Objectives and Schedule

Share the 65% Design with City of Coronado and City of Imperial Beach

1. 8 Nov morning, brief the Coronado City staff
2. 15 Nov – available to brief the Coronado City Council
3. 10 Nov – available to brief Coronado Transportation Committee
4. 8-21 Nov – available to brief to public at evening event scheduled by City of Coronado
5. 21 Nov afternoon, brief at the Coronado Complexes meeting
6. TBD Brief City of Imperial Beach staff
7. 23 Nov, comments from both cities due

Design Schedule:

1. 100% design due in late December 2016
2. Final design due late January
3. Solicit for bid early February
4. Caltrans final approval mid February
5. Award late March/early April
6. Approximately 18 months construction

Notices:

1. This is the 65% and there are still elements being worked/resolved.
2. This 65% will change as it moves to the 100%.
3. The 65% cost estimate still includes soft cost estimates.
4. We are very near the maximum budget possible.



Coastal Campus Entry Control Point Objectives and Schedule

5. If bids come in high we may need to remove or reduce some scope items to have an awardable project.



Naval Base Coronado Coastal Campus Transportation Management Plan

- California Department of Transportation (CALTRANS) approved Transportation Management Plan (TMP) on 13OCT
- TMP requires a Public Awareness Campaign to educate motorist, merchants, residents, elected official and government agencies bout construction impacts
- TMP Designed to prevent or mitigate congestion during construction activity at NBC Coastal Campus
- TMP implementation date – late Spring 2017

•LANE CLOSURES 9:00 AM to 4:00 PM MONDAY - FRIDAY



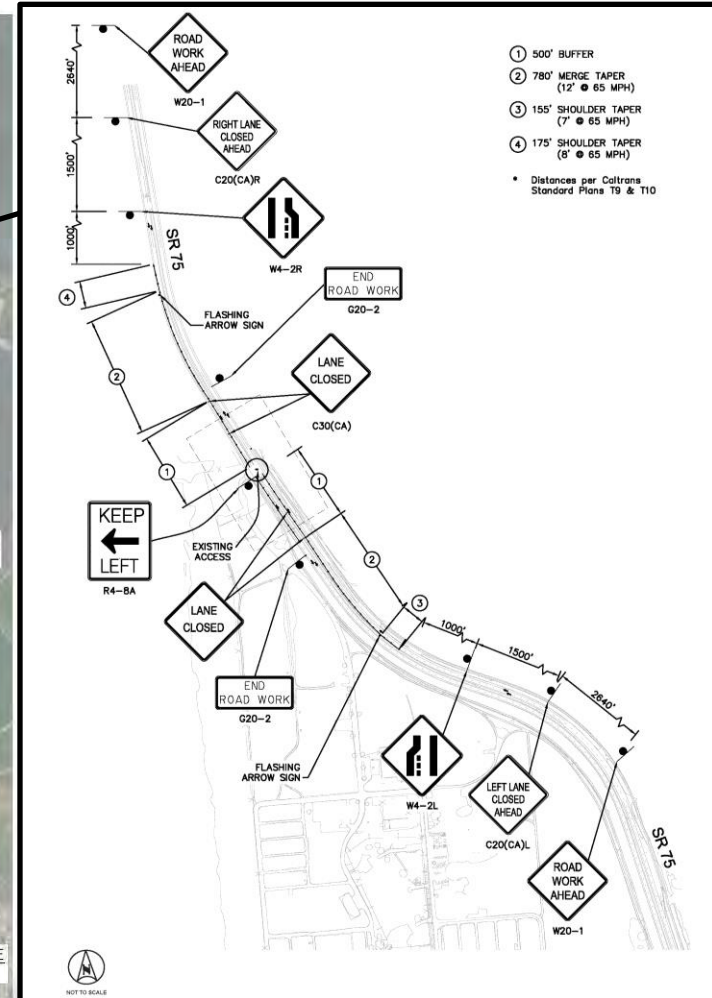
Naval Base Coronado Coastal Campus Transportation Management Plan

TMP Traffic Control Measures:

Speed Limit Reduction to 55 mph.

North and southbound SR-75 lane closures for construction deliveries.

Lane closure period 9:00 am – 4:00 pm
Monday-Friday.





Naval Base Coronado Coastal Campus Transportation Management Plan

TMP Traffic Control Measures:

Primary passenger vehicle construction traffic access via turnaround at Coronado Cays Blvd.

Duration: 6:30 am – 4:30 pm Monday-Friday.





Naval Base Coronado Coastal Campus Transportation Management Plan





Naval Base Coronado Coastal Campus Transportation Management Plan

TMP Public Awareness Campaign:

- Public notification is required in advance of implementation
- Media Posting: Web and Print
- SR-75 motorist signs
- Caltrans Highway Information Network (CHIN)
- SANDAG 5-1-1 Traveler Information



TMP Management:

A Traffic Management Team comprised of Caltrans and Naval Base Coronado Staff will provide TMP implementation oversight and incident management.

The TMP is a living document subject to revision based on traffic conditions once implemented.





Naval Base Coronado Coastal Campus Transportation Management Plan



Naval Base Coronado Coastal Campus Community Concerns Hot Line

Concerns or comments may be submitted by an electronic feedback form at:

http://www.cnrc.navy.mil/regions/cnrcsw/installations/navbase_coronado/about/CommunityConcerns.html

or;

via the Naval Base Coronado Community Concerns Hot Line at
(619)545-8847

SERVING AMERICA
SINCE 1775

Missions. Milestones. Moments in the
history of America's Navy.



Naval Base Coronado Coastal Campus Community Concerns Hot Line



"The mission of the Navy is to maintain, train and equip combat-ready Naval forces capable of winning wars, deterring aggression and maintaining freedom of the seas."

NAVY MISSION STATEMENT

**ALWAYS DEFENDING.
ALWAYS ON WATCH.**

Protecting our freedoms whenever and wherever they are needed.