

**at&t**  
MOBILITY

**CORONADO CAYS PARK RELOCATION**  
**490 CORONADO CAYS BOULEVARD "A"**  
**CORONADO, CA 92118**  
**SD0874**

**BOOTH & SUAREZ**

ARCHITECTURE ■ INCORPORATED  
325 CARLSBAD VILLAGE DRIVE, SUITE D2  
CARLSBAD, CA 92008 (760) 434-8474



PREPARED FOR



5738 PACIFIC CENTER BOULEVARD  
SAN DIEGO, CA 92121

APPROVALS

R.F.	DATE
ZONING	DATE
CONSTRUCTION	DATE
SITE ACQUISITION	DATE
AT&T MOBILITY APPROVAL	DATE
LANDLORD APPROVAL	DATE

PROJECT NAME

**CORONADO CAYS  
PARK RELOCATION**

PROJECT NUMBER  
**SD0874**

490 CORONADO CAYS BLVD "A"  
CORONADO, CA 92118  
SAN DIEGO COUNTY

DRAWING DATES

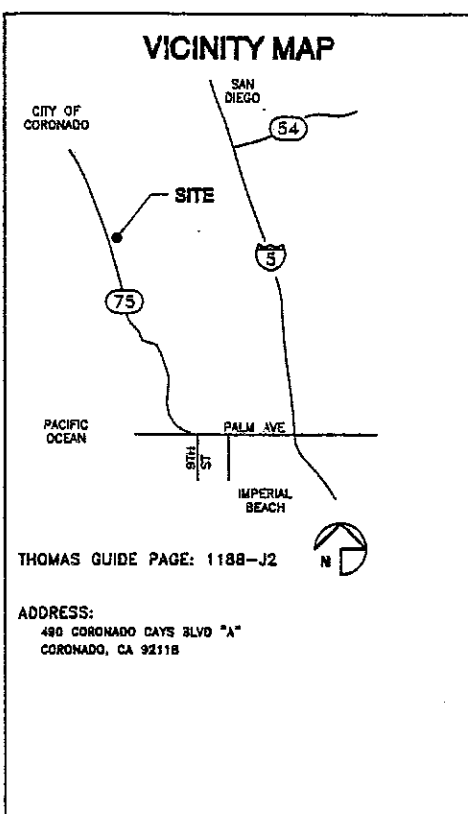
11/29/12	ZD REV 0 (rev)
11/30/12	ZD REV 1-ADD CSRF (rev)
02/14/13	ZD REV 2-CITY COMMENTS (rev)
02/21/13	ZD REV 3-RELO EQUIPMENT (rev)
07/03/14	DESIGN SKETCHES (rev)
07/25/14	ZD REV 4-REDESIGN (rev)
07/31/14	ZD REV 5-NEW EQUIPMENT (rev)
08/20/14	ZD REV 6-TREE HEIGHT (rev)

SHEET TITLE

**TITLE SHEET**

PROJECTS\AT&T\12228

**T-1**



THOMAS GUIDE PAGE: 1188-J2

ADDRESS:  
490 CORONADO CAYS BLVD "A"  
CORONADO, CA 92118

**NOTE:**

AT&T MUST RESTORE ALL PUBLIC PROPERTIES AFTER CONSTRUCTION TO PRE-CONSTRUCTION CONDITION TO THE SATISFACTION OF THE CITY OF CORONADO PARKS & RECREATION DEPARTMENT

**CONSULTANT TEAM**

**ARCHITECT:**  
BOOTH & SUAREZ ARCHITECTURE INC.  
325 CARLSBAD VILLAGE DRIVE, SUITE D2  
CARLSBAD, CA 92008  
(760) 434-8474  
(760) 434-8598 (FAX)

**LEASING:**  
PLANCOM, INC.  
302 STATE PLACE  
ESCONDIDO, CA 92029  
JODY BITTERLIH  
(760) 735-4912

**PLANNING:**  
PLANCOM, INC.  
302 STATE PLACE  
ESCONDIDO, CA 92029  
KERRIGAN DIEHL  
(760) 735-4912

**RF INFORMATION**

	LTE	GSM	UMTS
Tx	704.0 - 716.0 MHz	880.2 - 881.4 MHz 1950.0 - 1952.4 MHz	869.2 - 874.6 MHz 874.6 - 879.8 MHz 1945.0 - 1950.0 MHz 1970.0 - 1980.0 MHz
Rx	734.0 - 746.0 MHz	845.2 - 846.4 MHz 1870.0 - 1872.4 MHz	824.2 - 829.4 MHz 829.6 - 834.8 MHz 1865.0 - 1869.2 MHz 1880.2 - 1899.2 MHz
MAX EIRP:		700 MHz: 500 WATTS 850 MHz: 54 WATTS 1900 MHz: 34.5 WATTS	

**PROJECT SUMMARY**

**APPLICANT:** AT&T MOBILITY  
5738 PACIFIC CENTER BOULEVARD  
SAN DIEGO, CA 92121  
(619) 455-3388

**OWNER:** CITY OF CORONADO  
1825 STRAND WAY  
CORONADO, CA 92118  
SITE CONTACT: JEROME TORRES  
(619) 522-7300

**JURISDICTION:** CITY OF CORONADO

**PROJECT DESCRIPTION:**

- INSTALL A CONCRETE BLOCK EQUIPMENT ENCLOSURE WITH A CHARLIE LID & METAL TRELIS WITH A STUCCO FINISH, TEXTURED AND PAINTED TO MATCH EXISTING ADJACENT RESTROOM BUILDING
- INSTALL (12) AT&T MOBILITY PANEL ANTENNAS MOUNTED TO NEW 44"-0" HIGH MONOBROADLEAF LOCATED IN AN EXISTING LANDSCAPE PLANTER
- INSTALL (24) BRUS-11 UNITS MOUNTED TO PROPOSED MONOBROADLEAF CROSSARMS
- INSTALL (12) DOUBLE TMA UNITS MOUNTED TO PROPOSED MONOBROADLEAF CROSSARMS
- INSTALL (3) GPS ANTENNAS MOUNTED TO PROPOSED EQUIPMENT CABINETS
- INSTALL A NEW 200 AMP ELECTRICAL SERVICE
- INSTALL A NEW TELCO SERVICE CONNECTION
- INSTALL A NEW 50KW STANDBY GENERATOR WITH A 210 GALLON SUBBASE DOUBLE WALL DIESEL FUEL TANK ON A CONCRETE PAD WITH AN INTEGRAL CONTAINMENT CURB

**LEGAL DESCRIPTION:**

NOT PROVIDED

**ASSESSORS PARCEL NUMBER:** 815-095-01-00

**EXISTING TYPE OF CONSTRUCTION:** VB

**EXISTING ZONING:** OPEN SPACE

**OCCUPANCY:** NONE (OUTDOOR EQUIPMENT CABINETS ONLY)

**SHEET SCHEDULE**

T-1	TITLE SHEET
A-0	SITE PLAN
A-1	ENLARGED SITE PLAN
A-2	EQUIPMENT PLAN & ANTENNA PLAN
A-3	EXTERIOR ELEVATIONS
A-4	MONOTREE ELEVATION
L-1	LANDSCAPE DEVELOPMENT PLAN
LS-1	SITE SURVEY & GENERAL INFORMATION
LS-2	SITE SURVEY & GENERAL INFORMATION

**SCALE**

THE DRAWING SCALES SHOWN IN THIS SET REPRESENT THE CORRECT SCALE ONLY WHEN THESE DRAWINGS ARE PRINTED IN A 24" x 36" FORMAT. IF THIS DRAWING SET IS NOT 24" x 36", THIS SET IS NOT TO SCALE. ALL DRAWINGS ARE SCHEMATIC. DO NOT SCALE DRAWINGS TO DETERMINE OR VERIFY ANY DIMENSIONS. DRAWINGS OF ANY SIZE SHALL NEVER BE SCALED FOR ANYTHING OTHER THAN GENERAL REFERENCE.

**APPLICABLE CODES**

ALL WORK SHALL COMPLY WITH THE FOLLOWING APPLICABLE CODES:  
CALIFORNIA STATE BUILDING CODE, TITLE 24, 2013 EDITION  
UNIFORM BUILDING CODE, 2013 EDITION  
UNIFORM PLUMBING CODE, 2013 EDITION  
UNIFORM MECHANICAL CODE, 2013 EDITION  
NATIONAL ELECTRICAL CODE, 2013 EDITION  
IN THE EVENT OF CONFLICT, THE MOST RESTRICTIVE CODE SHALL PREVAIL



PREPARED FOR



5738 PACIFIC CENTER BOULEVARD  
 SAN DIEGO, CA 92121

APPROVALS

R.F.	DATE
ZONING	DATE
CONSTRUCTION	DATE
SITE ACQUISITION	DATE
AT&T MOBILITY APPROVAL	DATE
LANDLORD APPROVAL	DATE

PROJECT NAME

**CORONADO CAYS  
 PARK RELOCATION**

PROJECT NUMBER  
**SD0874**

490 CORONADO CAYS BLVD "A"  
 CORONADO, CA 92118  
 SAN DIEGO COUNTY

DRAWING DATES

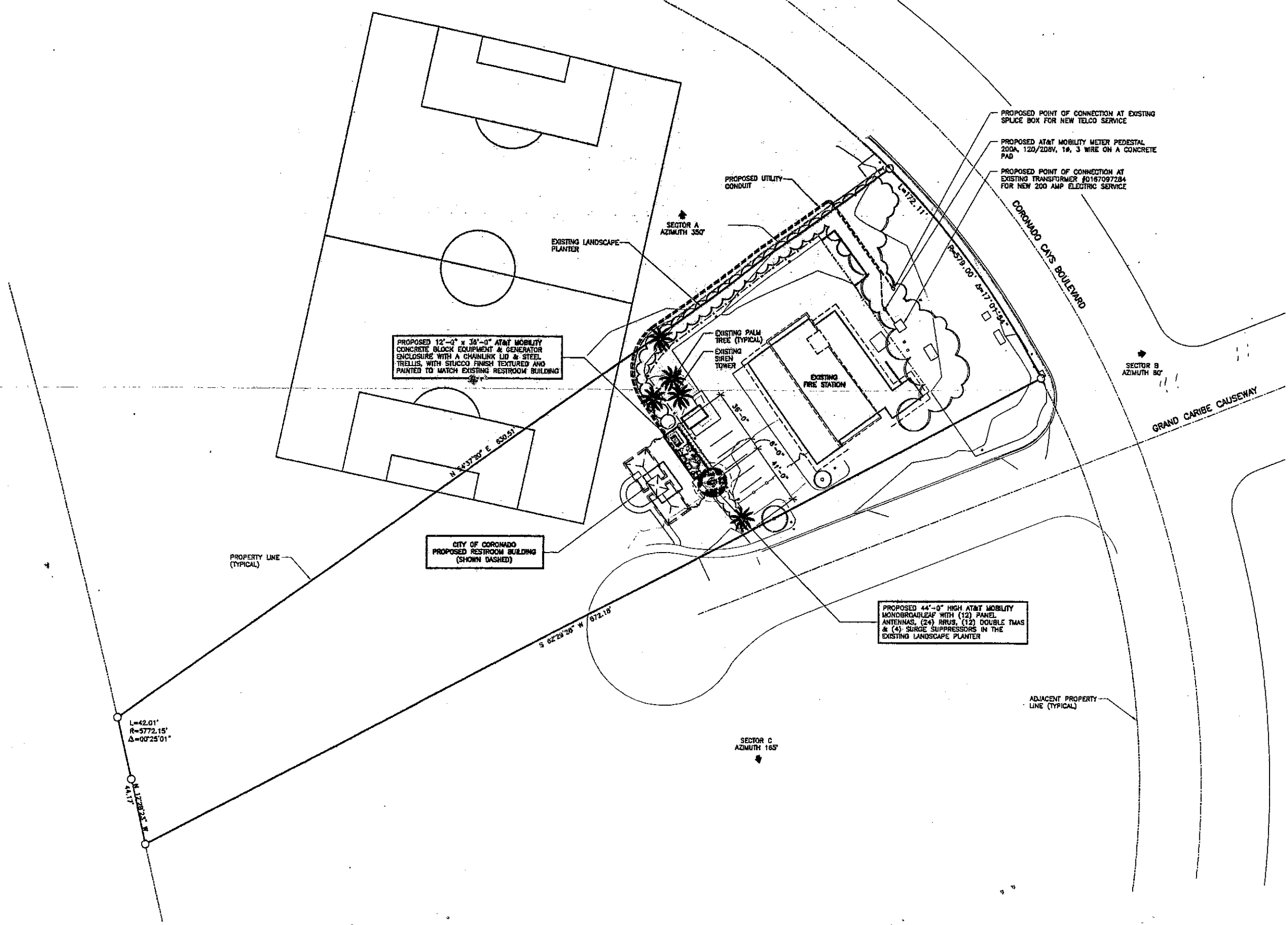
11/29/12	ZD REV 0 (rev)
11/30/12	ZD REV 1-ADD CSRF (rev)
02/14/13	ZD REV 2-CITY COMMENTS (rev)
02/21/13	ZD REV 3-RELO EQUIPMENT (rev)
07/03/14	DESIGN SKETCHES (rev)
07/25/14	ZD REV 4-REDESIGN (rev)
07/31/14	ZD REV 5-NEW EQUIPMENT (rev)
08/20/14	ZD REV 6-TREE HEIGHT (rev)

SHEET TITLE

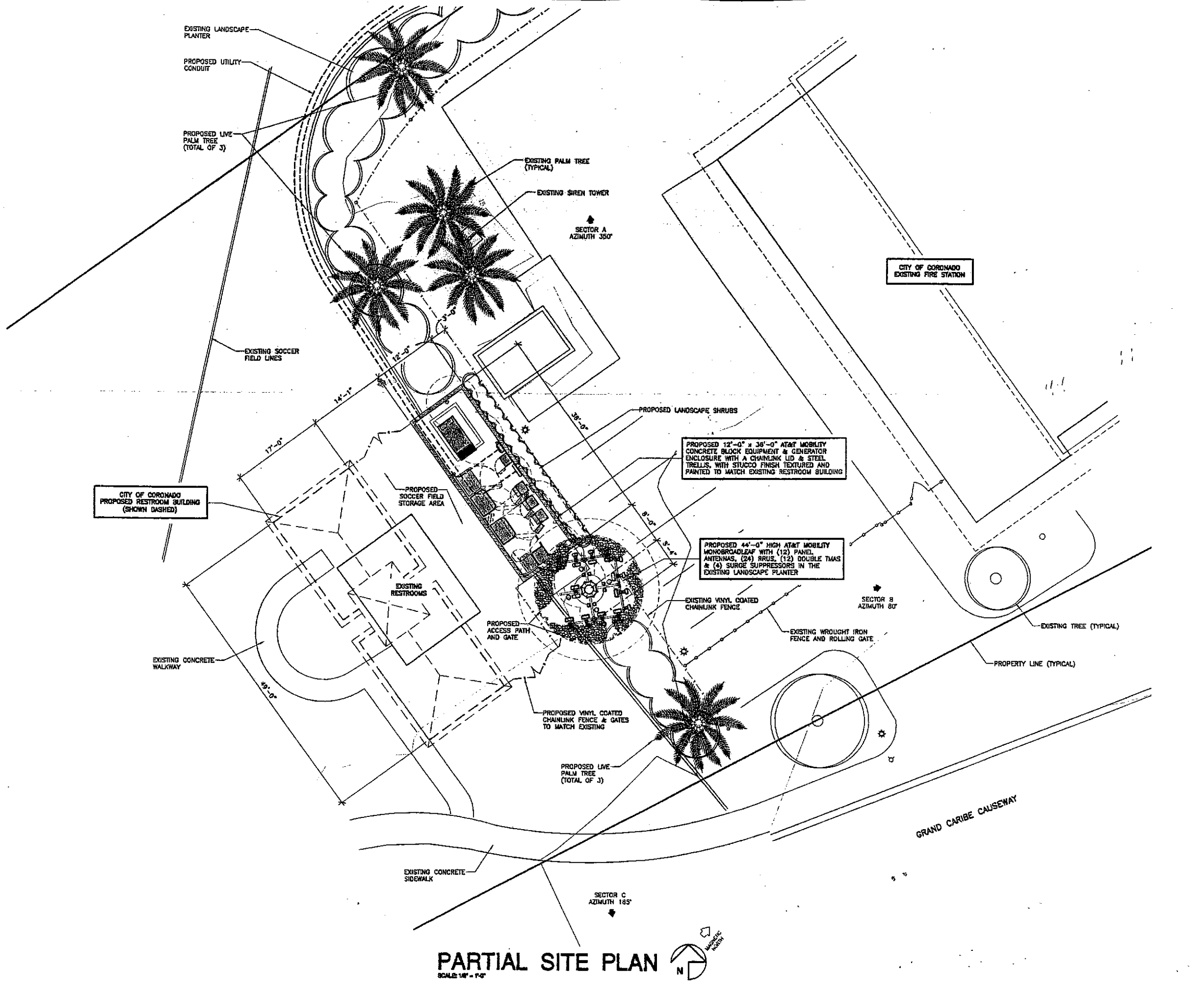
**SITE PLAN**

PROJECTS\AT&T\12228

**A-0**



**SITE PLAN**  
 SCALE 1"=80'



**PARTIAL SITE PLAN**

SCALE 1/8" = 1'-0"

**Booth & Suarez**  
 ARCHITECTURE INCORPORATED  
 305 CARLSBAD VILLAGE DRIVE, SUITE 01  
 CARLSBAD, CA 92008 (760) 434-8474

PREPARED FOR  
**at&t**  
 MOBILITY  
 5738 PACIFIC CENTER BOULEVARD  
 SAN DIEGO, CA 92121

APPROVALS

R.F.	DATE
ZONING	DATE
CONSTRUCTION	DATE
SITE ACQUISITION	DATE
AT&T MOBILITY APPROVAL	DATE
LANDLORD APPROVAL	DATE

PROJECT NAME  
**CORONADO CAYS  
 PARK RELOCATION**

PROJECT NUMBER  
**SD0874**

490 CORONADO CAYS BLYD "A"  
 CORONADO, CA 92118  
 SAN DIEGO COUNTY

DRAWING DATES

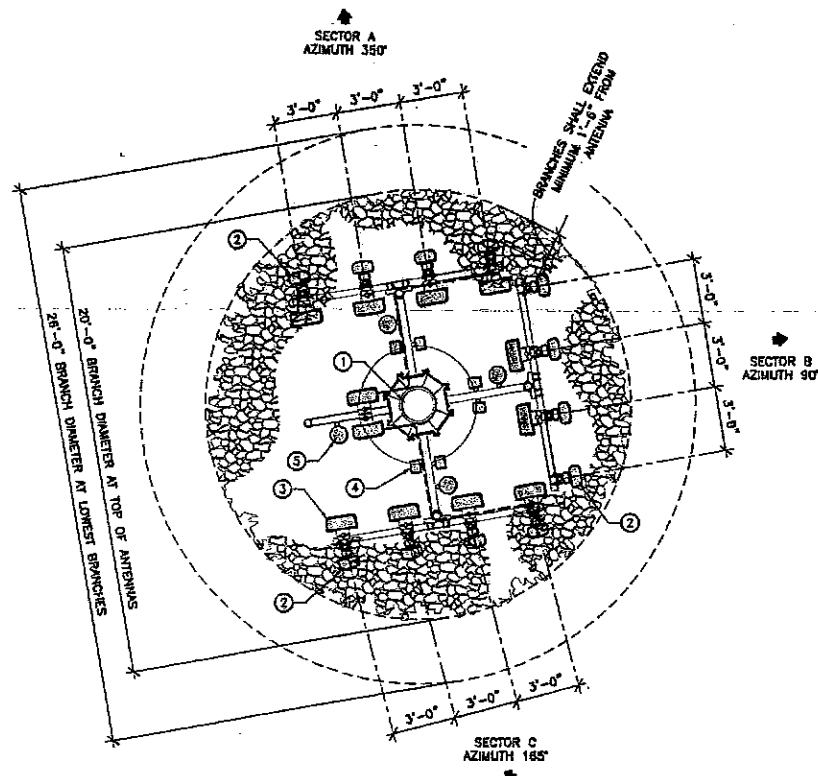
11/28/12	ZD REV 0 (rev)
11/30/12	ZD REV 1-ADD CSRF (rev)
02/14/13	ZD REV 2-CITY COMMENTS (rev)
02/21/13	ZD REV 3-RELO EQUIPMENT (rev)
07/03/14	DESIGN SKETCHES (rev)
07/25/14	ZD REV 4-REDESIGN (rev)
07/31/14	ZD REV 5-NEW EQUIPMENT (rev)
08/20/14	ZD REV 6-TREE HEIGHT (rev)

SHEET TITLE  
**ENLARGED SITE PLAN**

PROJECTS\AT&T\12226

**A-1**

ANTENNA AND COAXIAL CABLE SCHEDULE											
SECTOR ANTENNA	DIRECTION	AZIMUTH	ANTENNA MODEL NUMBER	TMA/RRU	DOWNTILT	SKEW ANGLE	SERIAL NUMBER	NUMBER OF CABLES PER SECTOR	COAX. CABLE LENGTH (+/- 3')	JUMPER LENGTH (+/- 3')	COAX SIZE
A1	NORTH	350°	COMASCOPE SBH4H-1065B	RRU				4	70'-0"	12'-0"	7/8"
A2			COMASCOPE SBH4H-1065B	RRU							
A3			COMASCOPE SBH4H-1065B	RRU							
A4			COMASCOPE SBH4H-1065B	TMA							
B1	EAST	90°	COMASCOPE SBH4H-1065B	RRU				4	70'-0"	6'-0"	7/8"
B2			COMASCOPE SBH4H-1065B	RRU							
B3			COMASCOPE SBH4H-1065B	RRU							
B4			COMASCOPE SBH4H-1065B	TMA							
C1	SOUTH	165°	COMASCOPE SBH4H-1065B	RRU				4	70'-0"	12'-0"	7/8"
C2			COMASCOPE SBH4H-1065B	RRU							
C3			COMASCOPE SBH4H-1065B	RRU							
C4			COMASCOPE SBH4H-1065B	TMA							
PROPOSED GPS			KATHREN 06-860/1920/ GPS-A					2	15'-0"	-	1/2"
PROPOSED GPS			KATHREN 06-860/1920/ GPS-A					2	15'-0"	-	1/2"
PROPOSED GPS			SYMETRCON S6332A GPS LI					2	15'-0"	-	1/2"

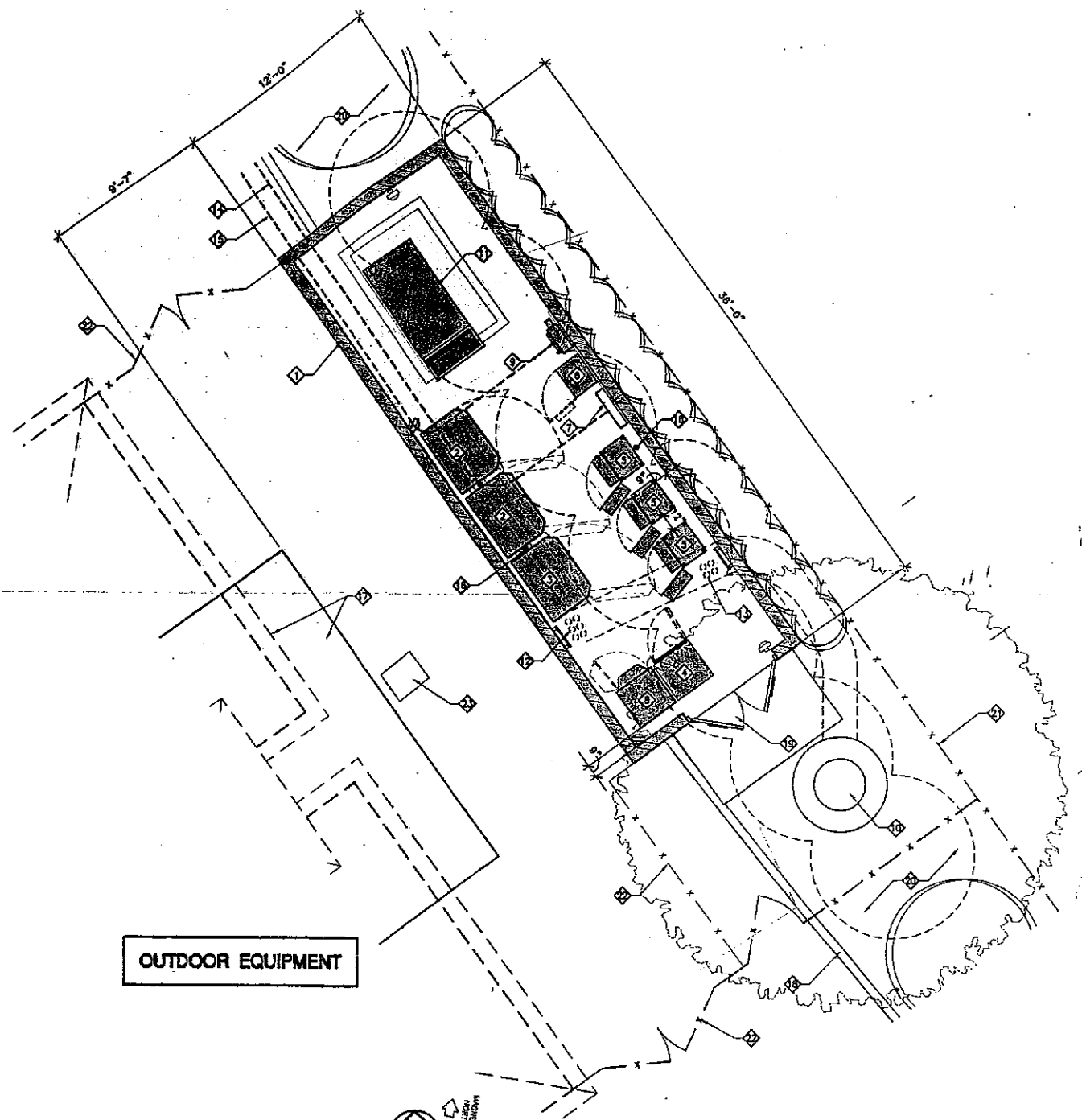


### ANTENNA PLAN

SCALE: 1/4" = 1'-0"

#### ANTENNA PLAN NOTES:

- PROPOSED 44'-0" HIGH MONOBROADLEAF
- PROPOSED (12) 8'-1" AT&T MOBILITY PANEL ANTENNAS (SHOWN SHADED) (TYPICAL). ALL PROPOSED ANTENNAS, MOUNTING ARMS, MOUNTING PIPES, & CABLES SHALL BE PAINTED TO MATCH PROPOSED FOLIAGE
- PROPOSED (24) RRUS (STACKED) (SHOWN SHADED) MOUNTED TO CROSSARM SUPPORT MOUNTED TO MONOBROADLEAF (TYPICAL)
- PROPOSED (12) DOUBLE TMAS (STACKED) (SHOWN SHADED) MOUNTED TO CROSSARM SUPPORT MOUNTED TO MONOBROADLEAF (TYPICAL)
- PROPOSED (4) SURGE SUPPRESSORS (SHOWN SHADED) MOUNTED TO MONOBROADLEAF (TYPICAL)



### OUTDOOR EQUIPMENT

### EQUIPMENT PLAN

SCALE: 1/4" = 1'-0"

#### EQUIPMENT PLAN NOTES:

- PROPOSED 12'-0" x 36'-0" AT&T MOBILITY STUCCO FINISHED CONCRETE BLOCK EQUIPMENT ENCLOSURE WITH CHAINLINK LID & STEEL TRELIS. STUCCO FINISH SHALL BE TEXTURED AND PAINTED TO MATCH EXISTING RESTROOM BUILDING
- PROPOSED AT&T MOBILITY GSM BTS EQUIPMENT CABINET (ERICSSON RBS 2106) MOUNTED ON BATTERY BASE FRAME (TOTAL OF 2)
- PROPOSED AT&T MOBILITY LTE POWER EQUIPMENT CABINET (ERICSSON RBS 3106) MOUNTED ON BATTERY BASE FRAME (TOTAL OF 1)
- PROPOSED AT&T MOBILITY LTE POWER EQUIPMENT CABINET (ARGUS Te45w3)
- PROPOSED AT&T MOBILITY LTE EQUIPMENT CABINET (PURCELL) ON A 14" HIGH PLINTH (TOTAL OF 3)
- PROPOSED PURCELL FIBER CABINET UNISTRUT MOUNTED TO WALL
- PROPOSED TELCO SPLICE BOX UNISTRUT MOUNTED TO WALL
- PROPOSED AT&T MOBILITY ARGUS BATTERY EXPANSION CABINET 'ARGUS/ALPHA Te45w3b' WITH (8) BATTERIES (30" WIDE x 72" HIGH x 30" DEEP) WEIGHT: 2800 LBS (TOTAL OF 1)
- PROPOSED 'INTERSECT, INC.' MP SERIES 200AMP POWER DISTRIBUTION LOAD CENTER WITH GENERATOR RECEPTACLE AND MANUAL TRANSFER SWITCH UNISTRUT MOUNTED TO NEW ENCLOSURE WALL
- PROPOSED 44'-0" HIGH AT&T MOBILITY MONOBROADLEAF WITH CONCRETE CAISSON FOOTING
- PROPOSED 50kW STANDBY GENERATOR WITH A 210 GALLON SUBBASE DOUBLE WALL DIESEL FUEL TANK ON A CONCRETE PAD WITH AN INTEGRAL CONTAINMENT CURB
- PROPOSED (6) 4" PVC CABLE CONDUIT. (4) TO THE MONOTREE, (2) TO THE PURCELL CABINETS. SEE NOTE 12
- PROPOSED (4) 4" PVC CABLE CONDUIT. (2) TO THE MONOTREE, (2) TO THE ERICSSON CABINETS. SEE NOTE 12
- PROPOSED TELCO CONDUIT IN TRENCH
- PROPOSED POWER CONDUIT IN TRENCH
- PROPOSED GPS ANTENNA MOUNTED TO EQUIPMENT CABINET (TOTAL OF 3)
- EXISTING CONCRETE BLOCK RESTROOM BUILDING, FUTURE RESTROOM BUILDING SHOWN DASHED
- EXISTING CONCRETE CURB
- PROPOSED 6'-0" WIDE CORRUGATED STEEL DOUBLE ACCESS GATE WITH AT&T ID SIGNAGE, DOOR, FRAME AND ALL ACCESSORIES SHALL BE PAINTED TO MATCH EXISTING RESTROOM BUILDING
- EXISTING LANDSCAPE PLANTER
- EXISTING CHAINLINK FENCE
- PROPOSED 6'-0" HIGH VINYL COATED CHAINLINK FENCE & GATES
- EXISTING IRRIGATION CONTROL BOX

**BOOTH & SUAREZ**  
 ARCHITECTURE INCORPORATED  
 395 CARLSBAD VILLAGE DRIVE, SUITE 09  
 CARLSBAD, CA 92008 (760) 434-8474

PREPARED FOR



5738 PACIFIC CENTER BOULEVARD  
 SAN DIEGO, CA 92121

#### APPROVALS

R.F.	DATE
ZONING	DATE
CONSTRUCTION	DATE
SITE ACQUISITION	DATE
AT&T MOBILITY APPROVAL	DATE
LANDLORD APPROVAL	DATE

#### PROJECT NAME

**CORONADO CAYS  
 PARK RELOCATION**

PROJECT NUMBER  
**SD0874**

490 CORONADO CAYS BLVD "A"  
 CORONADO, CA 92118  
 SAN DIEGO COUNTY

#### DRAWING DATES

11/29/12	ZD REV 0 (raw)
11/30/12	ZD REV 1-ADD CSRF (raw)
02/14/13	ZD REV 2-CITY COMMENTS (raw)
02/21/13	ZD REV 3-RELO EQUIPMENT (raw)
07/03/14	DESIGN SKETCHES (raw)
07/25/14	ZD REV 4-REDESIGN (raw)
07/31/14	ZD REV 5-NEW EQUIPMENT (raw)
08/20/14	ZD REV 6-TREE HEIGHT (raw)

#### SHEET TITLE

**ANTENNA PLAN  
 &  
 EQUIPMENT PLAN**

PROJECTS\AT&T\12226

**A-2**



PREPARED FOR



5738 PACIFIC CENTER BOULEVARD  
SAN DIEGO, CA 92121

APPROVALS

R.F.	DATE
ZONING	DATE
CONSTRUCTION	DATE
SITE ACQUISITION	DATE
AT&T MOBILITY APPROVAL	DATE
LANDLORD APPROVAL	DATE

PROJECT NAME

**CORONADO CAYS  
PARK RELOCATION**

PROJECT NUMBER  
**SD0874**

490 CORONADO CAYS BLVD "A"  
CORONADO, CA 92118  
SAN DIEGO COUNTY

DRAWING DATES

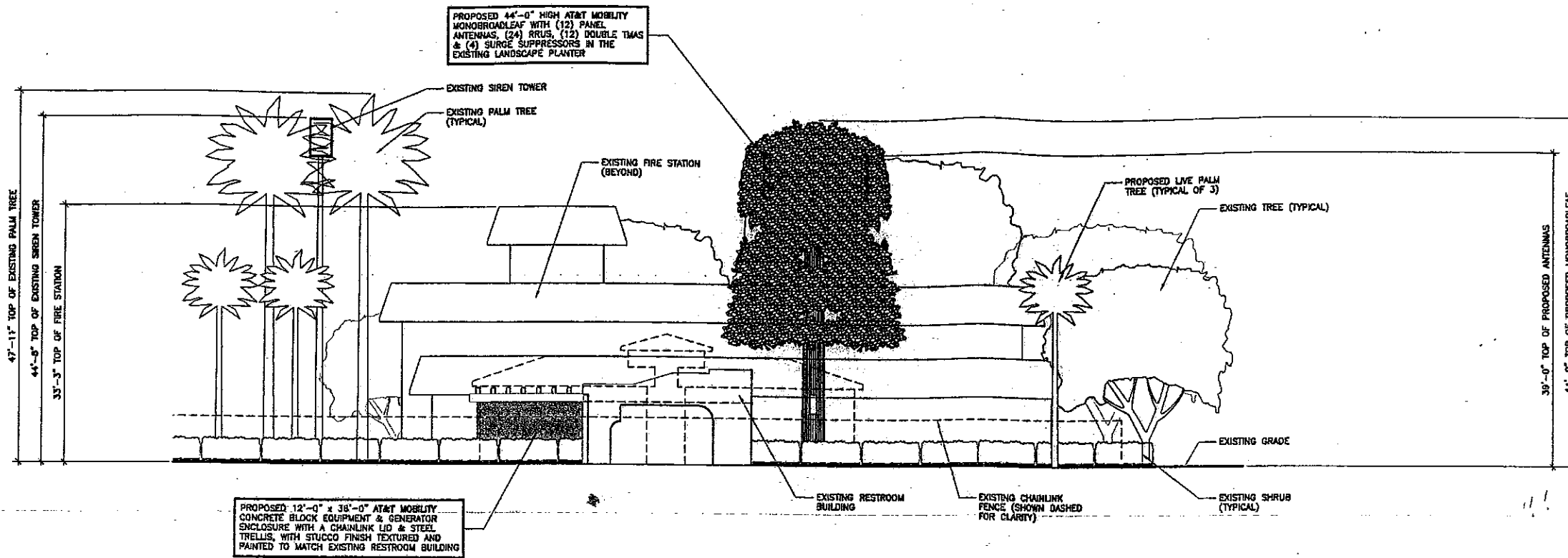
11/29/12	ZD REV 0 (rev)
11/30/12	ZD REV 1-ADD GSRF (rev)
02/14/13	ZD REV 2-CITY COMMENTS (rev)
02/21/13	ZD REV 3-RELO EQUIPMENT (rev)
07/03/14	DESIGN SKETCHES (rev)
07/25/14	ZD REV 4-REDESIGN (rev)
07/31/14	ZD REV 5-NEW EQUIPMENT (rev)
08/20/14	ZD REV 6-TREE HEIGHT (rev)

SHEET TITLE

**EXTERIOR ELEVATIONS**

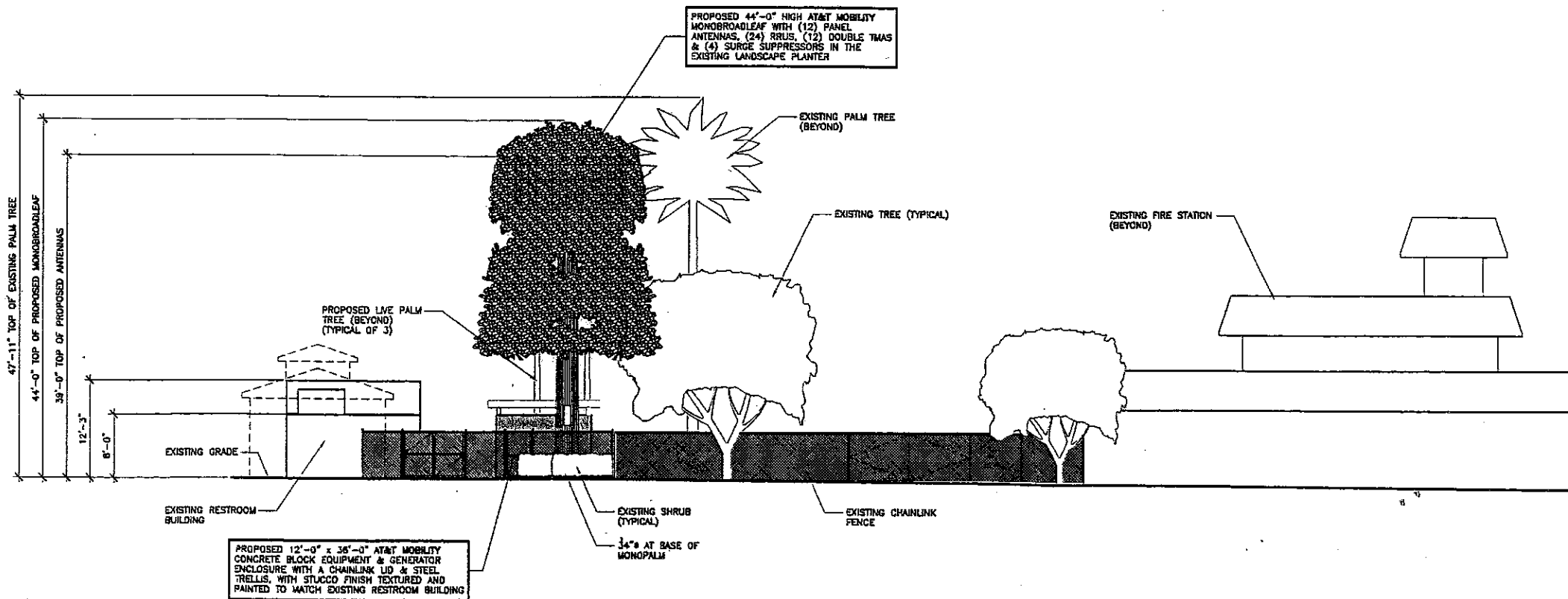
PROJECTS\AT&T\12228

**A-3**



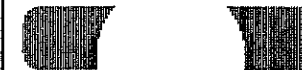
**WEST ELEVATION**

SCALE: 1/8" = 1'-0"



**SOUTH ELEVATION**

SCALE: 1/8" = 1'-0"



PREPARED FOR



5738 PACIFIC CENTER BOULEVARD  
 SAN DIEGO, CA 92121

APPROVALS

R.F.	DATE
ZONING	DATE
CONSTRUCTION	DATE
SITE ACQUISITION	DATE
AT&T MOBILITY APPROVAL	DATE
LANDLORD APPROVAL	DATE

PROJECT NAME

**CORONADO CAYS  
 PARK RELOCATION**

PROJECT NUMBER  
**SD0874**

490 CORONADO CAYS BLYD "A"  
 CORONADO, CA 92118  
 SAN DIEGO COUNTY

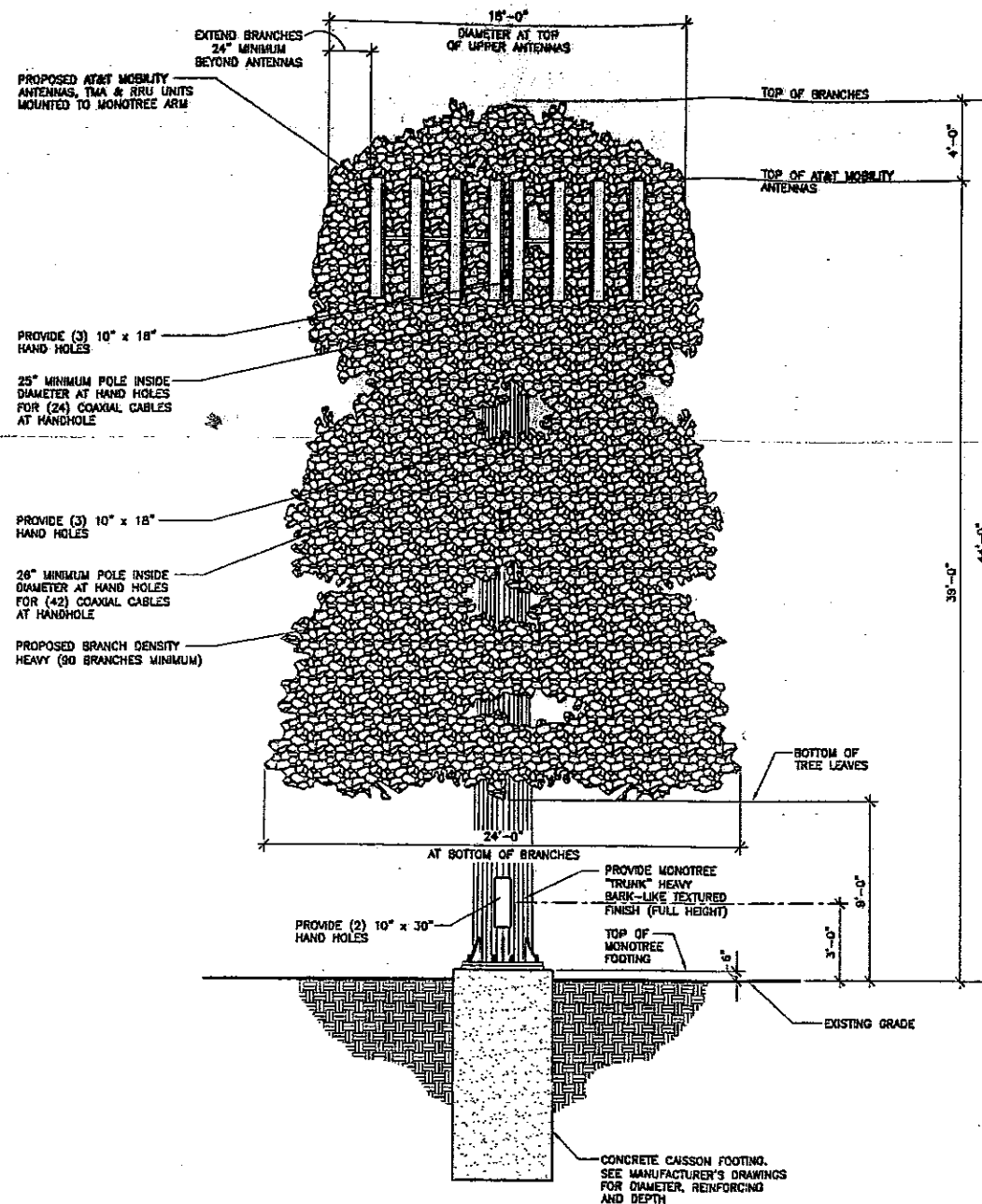
DRAWING DATES

11/29/12	ZD REV 0 (rev)
11/30/12	ZD REV 1-ADD CSRF (rev)
02/14/13	ZD REV 2-CITY COMMENTS (rev)
02/21/13	ZD REV 3-RELO EQUIPMENT (rev)
07/03/14	DESIGN SKETCHES (rev)
07/25/14	ZD REV 4-REDESIGN (rev)
07/31/14	ZD REV 5-NEW EQUIPMENT (rev)
08/20/14	ZD REV 6-TREE HEIGHT (rev)

SHEET TITLE

**BROADLEAF MONOTREE  
 ELEVATION**

PROJECTS\AT&T\12228



**BROADLEAF MONOTREE**  
 SCALE: 1/4" = 1'-0"

## LANDSCAPE & IRRIGATION SPECIFICATIONS

ALL LANDSCAPE AND IRRIGATION SHALL CONFORM TO STANDARDS OF THE CITY-WIDE LANDSCAPE REGULATIONS AND THE CITY OF CORONADO LANDSCAPE STANDARDS AND ALL OTHER LANDSCAPE RELATED CITY AND REGIONAL STANDARDS.

### PLANTING NOTES

1. DETERMINE THE LOCATION OF ALL UNDERGROUND UTILITIES PRIOR TO THE INITIATION OF ANY WORK. ALL WORK SHALL BE PERFORMED IN A MANNER WHICH WILL AVOID POSSIBLE DAMAGE TO UTILITIES. HAND EXCAVATE AS REQUIRED.
2. ROOT BARRIERS SHALL BE INSTALLED ADJACENT TO ALL PAVING SURFACES, WHERE A PAVING SURFACE IS LOCATED WITHIN 5' OF A TREE'S TRUNK. ROOT BARRIERS SHALL EXTEND FOUR FEET IN EACH DIRECTION, FROM THE CENTER LINE OF THE TRUNK, FOR A TOTAL DISTANCE OF 8 FEET. INSTALLING ROOT BARRIERS AROUND THE ROOT BALL IS UNACCEPTABLE.
3. TREES WILL BE LOCATED A MINIMUM DISTANCE OF 3 FEET FROM ANY PAVING SURFACE, CURB, WALL, OR CONCRETE MOW STRIP.
4. ALL PLANTING AREAS, SHALL RECEIVE A 3" LAYER OF MULCH.
5. PLANTING MAINTENANCE CRITERIA: ALL LANDSCAPE INSTALLATION SHALL BE MAINTAINED IN ACCORDANCE WITH THE CITY OF CORONADO LANDSCAPE STANDARDS.
6. MINIMUM TREE SEPARATION DISTANCE IMPROVEMENT/MINIMUM DISTANCE TO STREET TREE:  
TRAFFIC SIGNALS (STOP SIGN) - 20 FEET  
UNDERGROUND UTILITY LINES - 5 FEET (10 FEET FOR SEWER)  
ABOVE GROUND UTILITY STRUCTURES - 10 FEET  
DRIVEWAYS (ENTRIES) - 10 FEET  
INTERSECTIONS (INTERSECTING CURB LINES OF TWO STREETS) - 25 FEET
7. IRRIGATION: AN IRRIGATION SYSTEM SHALL BE PROVIDED AS REQUIRED FOR PROPER IRRIGATION, DEVELOPMENT AND MAINTENANCE OF THE VEGETATION. THE DESIGN OF THE SYSTEM SHALL PROVIDE ADEQUATE SUPPORT FOR THE VEGETATION SELECTED.
8. MAINTENANCE: ALL REQUIRED LANDSCAPE AREAS SHALL BE MAINTAINED BY THE PROPERTY OWNER. THE LANDSCAPE AREAS SHALL BE MAINTAINED IN A FREE OF DEBRIS AND ALL PLANT MATERIAL SHALL BE MAINTAINED IN A HEALTHY GROWING CONDITION. DISEASED OR DEAD PLANT MATERIAL SHALL BE SATISFACTORY TREATED OR REPLACED PER THE CONDITIONS OF THE PERMIT.
9. THE FOLLOWING PROTECTION FOR EXISTING TREES TO REMAIN ON SITE WILL BE PROVIDED:
  - A. A BRIGHT YELLOW OR ORANGE TEMPORARY FENCE WILL BE PLACED AROUND EXISTING TREES AT THE DRIP LINE.
  - B. STOCKPILING, TOPSOIL, DISTURBANCE, CONSTRUCTION MATERIAL, STORAGE, VEHICLE USE, FOOT TRAFFIC, AND STORAGE OF ANY KIND IS PROHIBITED WITHIN THE DRIP LINE.
  - C. ROOT SYSTEMS OF EXISTING TREES ON SITE WILL BE PROTECTED FROM FLOODING, EROSION, CHEMICAL SPILLS, AND EXCESSIVE WETTING AND DRYING DURING DE-WATERING.
  - D. THE EXISTING GRADE WILL BE MAINTAINED WITHIN THE DROP LINE OF EXISTING TREES ON SITE.
  - E. ROOTS OF EXISTING TREES ON SITE WILL BE CUT APPROXIMATELY 6 INCHES BACK FROM NEW CONSTRUCTION AND ALL CUTS WILL BE SEALED WITH WOOD PAINT AS MANUFACTURED BY FLINTKOTE OR APPROVED EQUAL.
  - F. MAINTAIN AND DOCUMENT A TREE WATERING SCHEDULE DURING CONSTRUCTION.
  - G. ALL DAMAGED TREES WILL BE REPLACED WITH ONE OF EQUAL OR GREATER SIZE.

### REVEGETATION REQUIREMENTS

ALL GRADED, DISTURBED OR ERODED AREAS THAT WILL NOT BE PERMANENTLY PAVED OR COVERED BY STRUCTURE SHALL BE PERMANENTLY REVEGETATED AND IRRIGATED IN ACCORDANCE WITH THE CITY OF CORONADO LANDSCAPE STANDARDS.

### PLANTING LEGEND

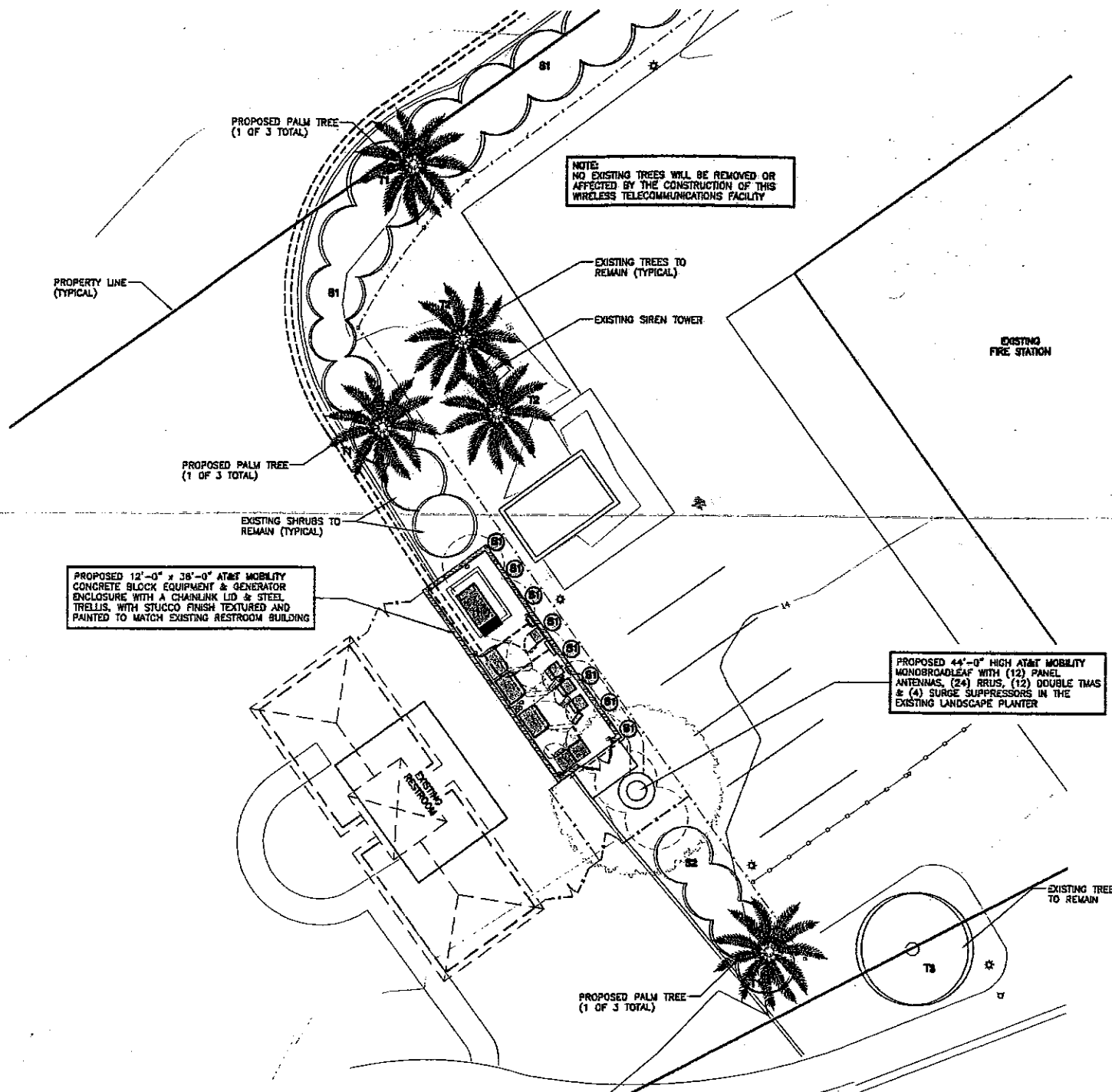
SYMBOL	BOTANICAL NAME	COMMON NAME	FORM / FUNCTION	QUANTITY	MATURE HEIGHT / SPREAD
	PROPOSED PHOENIX CANARIENSIS	CANARY ISLAND DATE PALM (24" BARE BARK HEIGHT)	SCREENING	3	UP TO 100' HIGH 10'-15" SPREAD
	EXISTING PHOENIX CANARIENSIS	CANARY ISLAND DATE PALM	EXISTING TREE	2	N/A (EXISTING)
	EXISTING TREE	-	EXISTING TREE	1	N/A (EXISTING)
	BOUGAINVILLEA SPECTABILIS	BOUGAINVILLEA	SCREENING VINE	8	N/A
	EXISTING SHRUB	-	EXISTING SHRUB	MANY	N/A (EXISTING)

## LANDSCAPE DEVELOPMENT PLAN

SCALE: 1" = 10'-0"

LANDSCAPE FORM AND FUNCTION: SELECTED LANDSCAPE IS TO VISIBLY SCREEN THE MONOPALM BY INTEGRATING THE MONOPALM AND LIVE PALM TREES SPREAD OUT IN THE EXISTING LANDSCAPE PLANTER

NOTE:  
ANY EXISTING LANDSCAPE OR IRRIGATION DAMAGED OR DISTURBED DURING THE COURSE OF CONSTRUCTION SHALL BE REPLACED OR REPAIRED IN-KIND.



**Booth & Suarez**

ARCHITECTURE ■ INCORPORATED  
385 CALLEAD VILLAGE DRIVE, SUITE D9  
CARLSBAD, CA 92008 (760) 434-8474



PREPARED FOR



5738 PACIFIC CENTER BOULEVARD  
SAN DIEGO, CA 92121

APPROVALS

R.F.	DATE
ZONING	DATE
CONSTRUCTION	DATE
SITE ACQUISITION	DATE
AT&T MOBILITY APPROVAL	DATE
LANDLORD APPROVAL	DATE

PROJECT NAME

**CORONADO CAYS  
PARK RELOCATION**

PROJECT NUMBER  
**SD0874**

490 CORONADO CAYS BLVD "A"  
CORONADO, CA 92118  
SAN DIEGO COUNTY

DRAWING DATES

11/29/12	ZD REV 0 (row)
11/30/12	ZD REV 1-ADD CSRF (row)
02/14/13	ZD REV 2-CITY COMMENTS (row)
02/21/13	ZD REV 3-RELO EQUIPMENT (row)
07/03/14	DESIGN SKETCHES (row)
07/25/14	ZD REV 4-REDESIGN (row)
07/31/14	ZD REV 5-NEW EQUIPMENT (row)
08/20/14	ZD REV 5-TREE HEIGHT (row)

SHEET TITLE

**LANDSCAPE  
DEVELOPMENT PLAN**

PROJECTS\AT&T\12228

L-1


**Booth & Suarez**  
 ARCHITECTURE INCORPORATED  
 302 CARLSBAD HILGIE DRIVE SUITE 09  
 CARLSBAD, CA 92008 (760) 434-8474

PREPARED FOR  
  
 6925 LUSK BOULEVARD  
 SAN DIEGO, CA 92121

PREPARED BY: DAF  
 CHECKED BY: DAF  
 APPROVED BY: DAF

#	DATE	REVISIONS
1.	11/21/12	SITE SURVEY
2.	4/26/13	EQUIPMENT AREA

**FLOYD SURVEYING**  
 2521 GREEN RIVER RD.  
 STE 105-202  
 CORONA, CA 92882  
 CELL: (949) 200-0626  
 EMAIL: fsl@floydsurveying.com



SITE NAME  
**CORONADO CAYS PARK RELO**

SITE NUMBER  
**SD0074**

SITE ADDRESS  
 SW OF CORONADO CAYS BLVD  
 & GRAND CARIBE CAUSEWAY  
 CDONADO, CA 92118

SHEET TITLE  
**SITE SURVEY  
 GENERAL INFORMATION**

SHEET NUMBER  
**LS1**



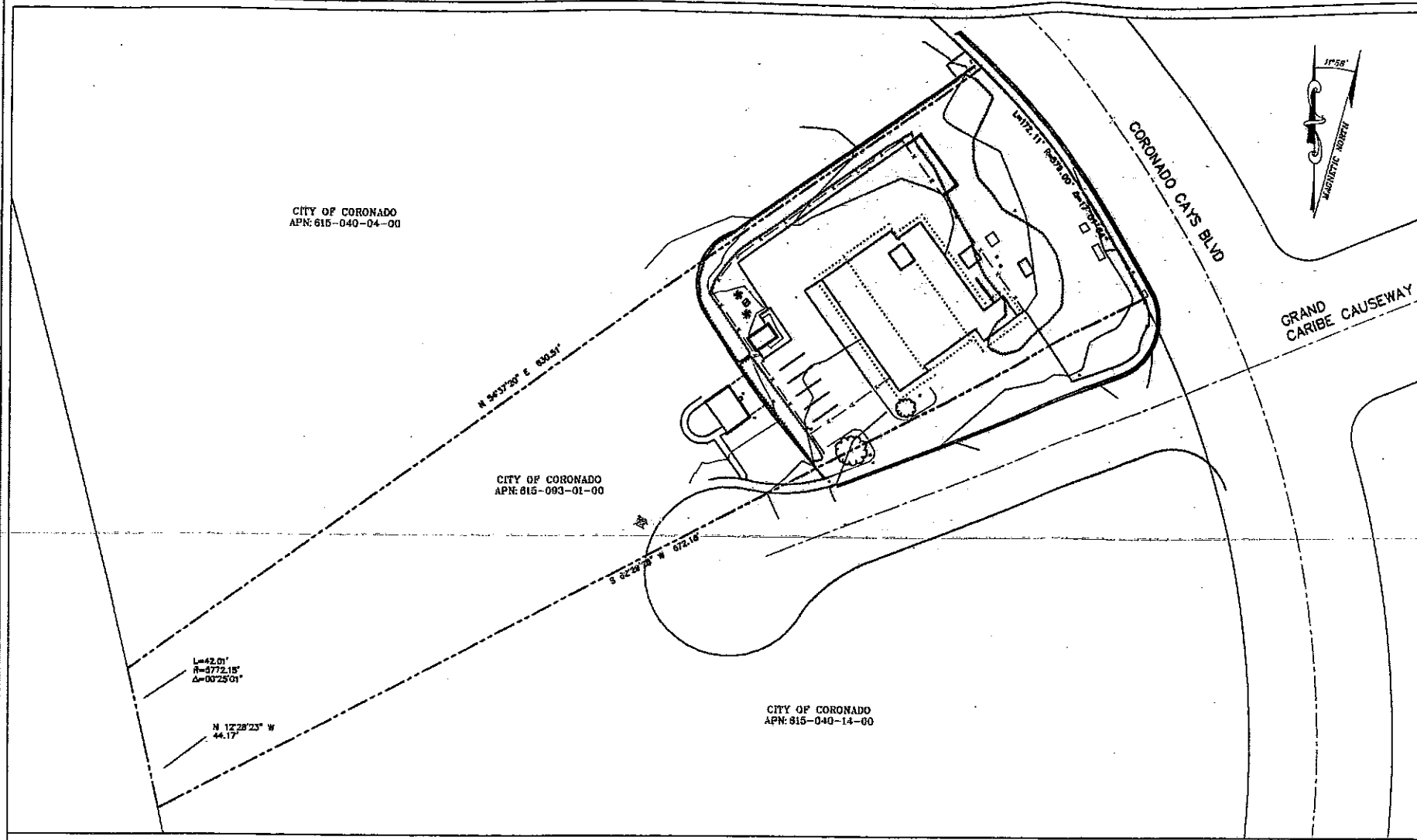
VICINITY MAP

**LEGEND**


- These standard symbols will be found in the drawing.
- ⊠ BENCHMARK
  - ⊞ CABLE TV BOX
  - ⊙ ELECTRICAL MANHOLE
  - ⊕ FIRE HYDRANT
  - POLE
  - ⊙ LIGHT POLE
  - ⊙ SIGN
  - ⊙ TELEPHONE BOX
  - ⊙ TELEPHONE PEDESTAL
  - ⊙ TREE DECIDUOUS
  - ⊙ TREE PALM
  - E—E— UNDERGROUND ELECTRICAL
  - EC EDGE OF CONCRETE
  - ELCB ELCSB
  - ELTR ELTR
  - EP EP
  - FL FLOWLINE CURB & GUTTER
  - FNCP FENCE TOP
  - UP UP OF GUTTER
  - LP LIGHT POLE TOP
  - NG NG
  - PS PAINT STRIPING
  - RFOH ROOF OVERHANG
  - RTOP RTOP
  - SW SIDEWALK
  - TC TOP OF CURB
  - TLVA TELEPHONE VAULT
  - TRTP TREE TOP DECIDUOUS
  - TRTP2 TREE TOP PALM
  - TW WALL TOP
  - BOUNDARY LINE
  - CENTERLINE
  - MISC. PROPERTY LINE
  - MISC. TIE LINE
  - RIGHT-OF-WAY LINE
  - EASEMENT LINE
  - FENCE LINE

**LEGEND**

- This is not a boundary survey. This is a specialized topographic map. The property lines and easements shown hereon are from record information as noted hereon. Floyd Surveying, Inc. translated the topographic survey to record information using the two found monuments shown hereon. No title research was performed by Floyd Surveying, Inc.
- Any changes made to the information on this plan, without the written consent of Floyd Surveying, Inc. relieves Floyd Surveying, Inc. of any and all liability.
- These drawings & specifications are the property & copyright of Floyd Surveying, Inc. & shall not be used on any other work except by agreement with the Surveyor. Written dimensions shall take preference over scaled & shall be verified on the job site. Any discrepancy shall be brought to the notice of the Surveyor prior to commencement of any work.
- Field survey completed on NOVEMBER 19, 2012.



**OVERALL SITE PLAN**

SCALE: 1"=40'  


OWNER'S NAME: CITY OF CORONADO  
 ASSESSOR'S PARCEL NUMBER(S) 615-093-01-00  
 BASIS OF BEARINGS: (NAD 83; Epoch 2002)  
 THE BEARINGS SHOWN HEREON ARE BASED ON TRUE NORTH AS DETERMINED BY G.P.S. OBSERVATIONS, USING TRIMBLE 5700/5800 RECEIVERS AND TRIMBLE GEODETIC OFFICE 1.60 SOFTWARE.

BASIS OF ELEVATIONS: NAVD 1988  
 ELEVATIONS ARE BASED ON THE CITY OF CORONADO BENCHMARK #512, LOCATED IN THE SW CORNER OF CORONADO CAYS BLVD AND GRAND CARIBE CAUSEWAY. ELEVATION = 11.445 FEET.

**SITE DATA**

FEMA FLOOD ZONE DESIGNATION: National Flood Insurance Program:  
 County: SAN DIEGO Effective Date: 5/16/2012  
 Panel: 21326 Community-Panel Number: 05073C  
 The Flood Zone Designation for this site is: ZONE X

(WAITING FOR TITLE)	(WAITING FOR TITLE)	(WAITING FOR TITLE)	<p>OWNER'S NAME: CITY OF CORONADO          ASSESSOR'S PARCEL NUMBER(S) 615-093-01-00          BASIS OF BEARINGS: (NAD 83; Epoch 2002)          THE BEARINGS SHOWN HEREON ARE BASED ON TRUE NORTH AS DETERMINED BY G.P.S. OBSERVATIONS, USING TRIMBLE 5700/5800 RECEIVERS AND TRIMBLE GEODETIC OFFICE 1.60 SOFTWARE.</p> <p>BASIS OF ELEVATIONS: NAVD 1988          ELEVATIONS ARE BASED ON THE CITY OF CORONADO BENCHMARK #512, LOCATED IN THE SW CORNER OF CORONADO CAYS BLVD AND GRAND CARIBE CAUSEWAY. ELEVATION = 11.445 FEET.</p> <p><b>SITE DATA</b>          FEMA FLOOD ZONE DESIGNATION: National Flood Insurance Program:          County: SAN DIEGO Effective Date: 5/16/2012          Panel: 21326 Community-Panel Number: 05073C          The Flood Zone Designation for this site is: ZONE X</p>
PROPERTY LEGAL DESCRIPTION	TITLE REPORT NOTES	FEMA FLOOD ZONE INFORMATION	GENERAL NOTES



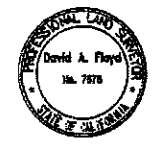
**BOOTH & SUAREZ**  
 ARCHITECTURE INCORPORATED  
 305 CHARLESBURG VILLAGE DRIVE, SUITE D9  
 CALLESA, CA 92008 (760) 434-8474

PREPARED FOR  
  
 8925 LUSK BOULEVARD  
 SAN DIEGO, CA 92121

PREPARED BY: DAF  
 CHECKED BY: DAF  
 APPROVED BY: DAF

#	DATE	REVISIONS
1.	11/21/12	SITE SURVEY
2.	4/26/13	EQUIPMENT AREA

**FLOYD SURVEYING**  
 2821 GREEN RIVER RD.  
 STE 105-202  
 CORONA, CA 92882  
 CELL: (949) 200-0625  
 EMAIL: fs@floydsurveying.com



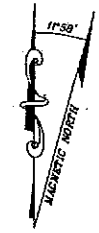
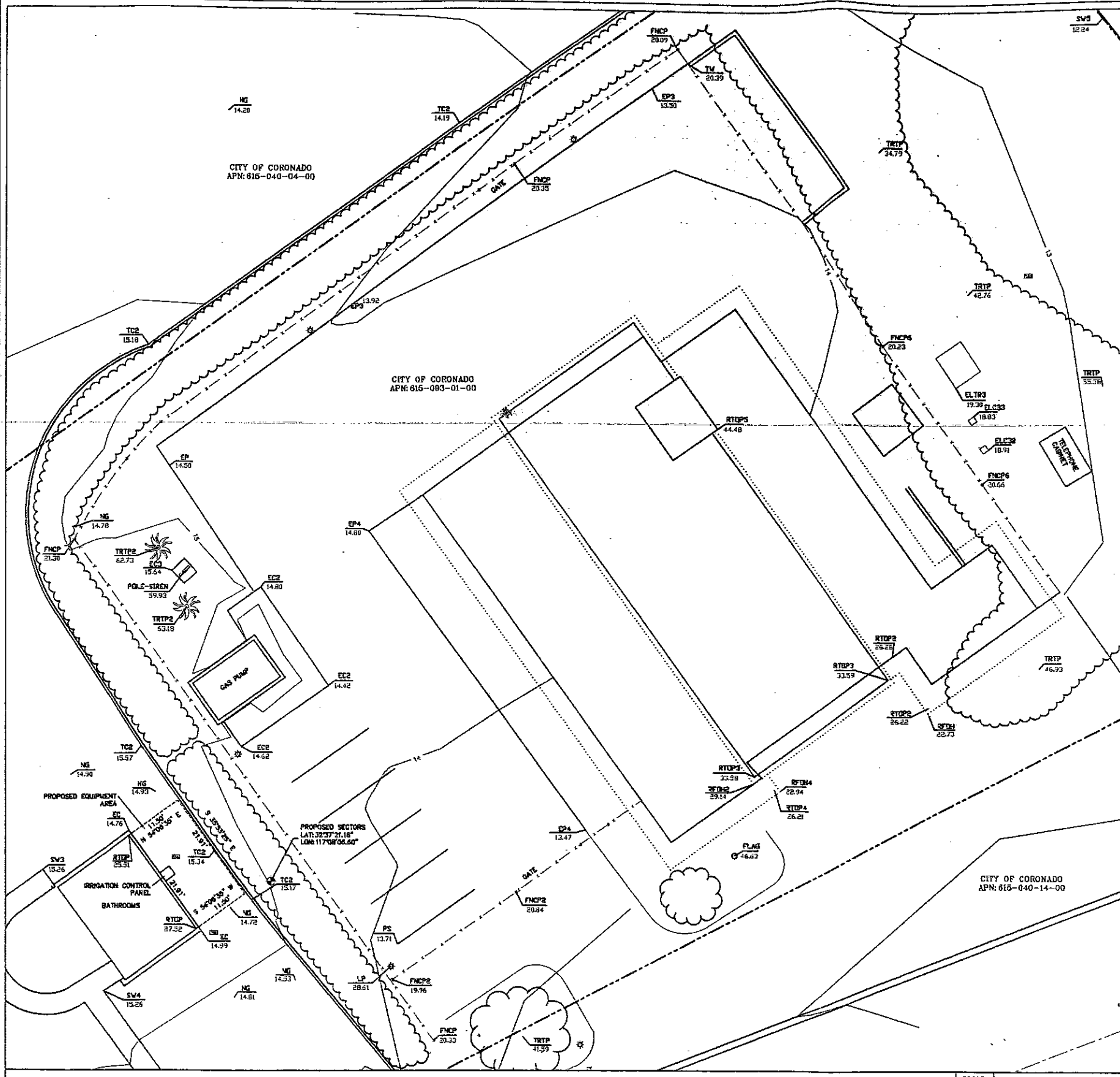
SITE NAME  
**CORONADO CAYS PARK RELO**

SITE NUMBER  
**SD0074**

SITE ADDRESS  
 SW OF CORONADO CAYS BLVD  
 & GRAND CARIBE CAUSEWAY  
 CORONADO, CA 92118

SHEET TITLE  
**SITE SURVEY  
 GENERAL INFORMATION**

SHEET NUMBER  
**LS2**



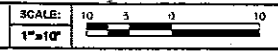
**LEGEND**

- These standard symbols will be found in the drawing.
- BENCHMARK
  - CABLE TV BOX
  - ⊙ ELECTRICAL MANHOLE
  - ⊕ FIRE HYDRANT
  - ⊖ POLE
  - LIGHT POLE
  - ⊙ SIGN
  - ⊙ TELEPHONE BOX
  - ⊙ TELEPHONE PEDESTAL
  - TREE DECIDUOUS
  - TREE PALM
  - UNDERGROUND ELECTRICAL
  - EC EDGE OF CONCRETE
  - ELCB ELECTRICAL CABINET
  - ELTR ELECTRICAL TRANSFORMER
  - EP EDGE OF PAVEMENT
  - FL FLOWLINE CURB & GUTTER
  - FNCP FENCE TOP
  - LP LIP OF GUTTER
  - LP LIGHT POLE TOP
  - NG GROUND SPOT ELEVATION
  - PS PAINT STRIPING
  - RFOH ROOF OVERHANG
  - RTOP ROOF TOP
  - SW SIDEWALK
  - TC TOP OF CURB
  - TLVA TELEPHONE VAULT
  - TRIP TREE TOP DECIDUOUS
  - TRIP2 TREE TOP PALM
  - TW WALL TOP
  - BOUNDARY LINE
  - CENTERLINE
  - MISC. PROPERTY LINE
  - MISC. TIE LINE
  - RIGHT-OF-WAY LINE
  - EASEMENT LINE
  - FENCE LINE

**LEGEND**

- 1) This is not a boundary survey. This is a specialized topographic map. The property lines and easements shown hereon are from record information as noted hereon. Floyd Surveying, Inc. translated the topographic survey to record information using the two found monuments shown hereon. No title research was performed by Floyd Surveying, Inc.
- 2) Any changes made to the information on this plan, without the written consent of Floyd Surveying, Inc. relieves Floyd Surveying, Inc. of any and all liability.
- 3) These drawings & specifications are the property & copyright of Floyd Surveying, Inc. & shall not be used on any other work except by agreement with the Surveyor. Written dimensions shall take preference over scaled & shall be verified on the job site. Any discrepancy shall be brought to the notice of the Surveyor prior to commencement of any work.
- 4) Field survey completed on NOVEMBER 19, 2012.

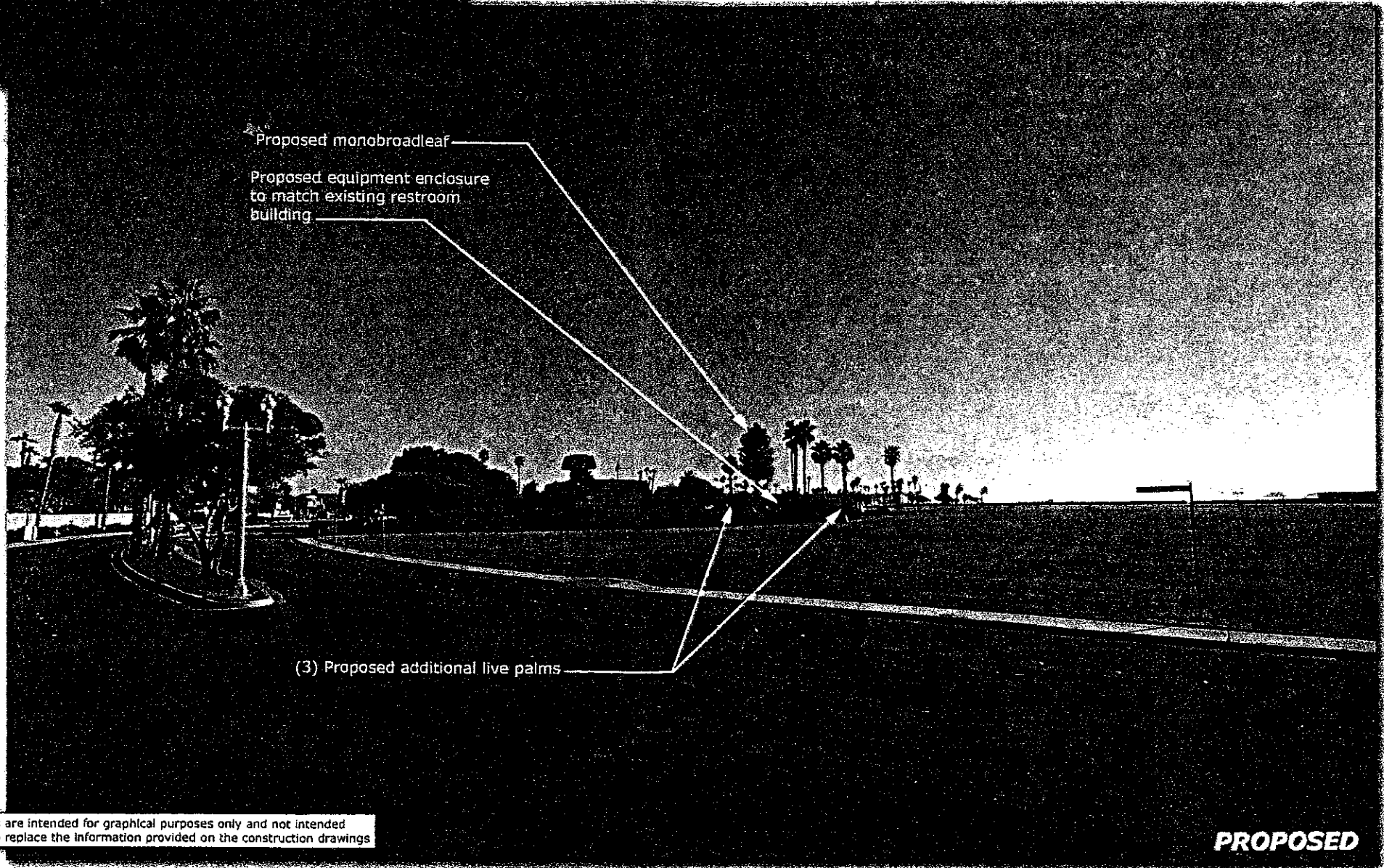
**DETAIL SITE PLAN**



**GENERAL NOTES**



 **SD0874**  
**Coronado Cays**  
**Park Relocation**  
490 Coronado Cays Blvd. "A"  
Coronado, CA 92118



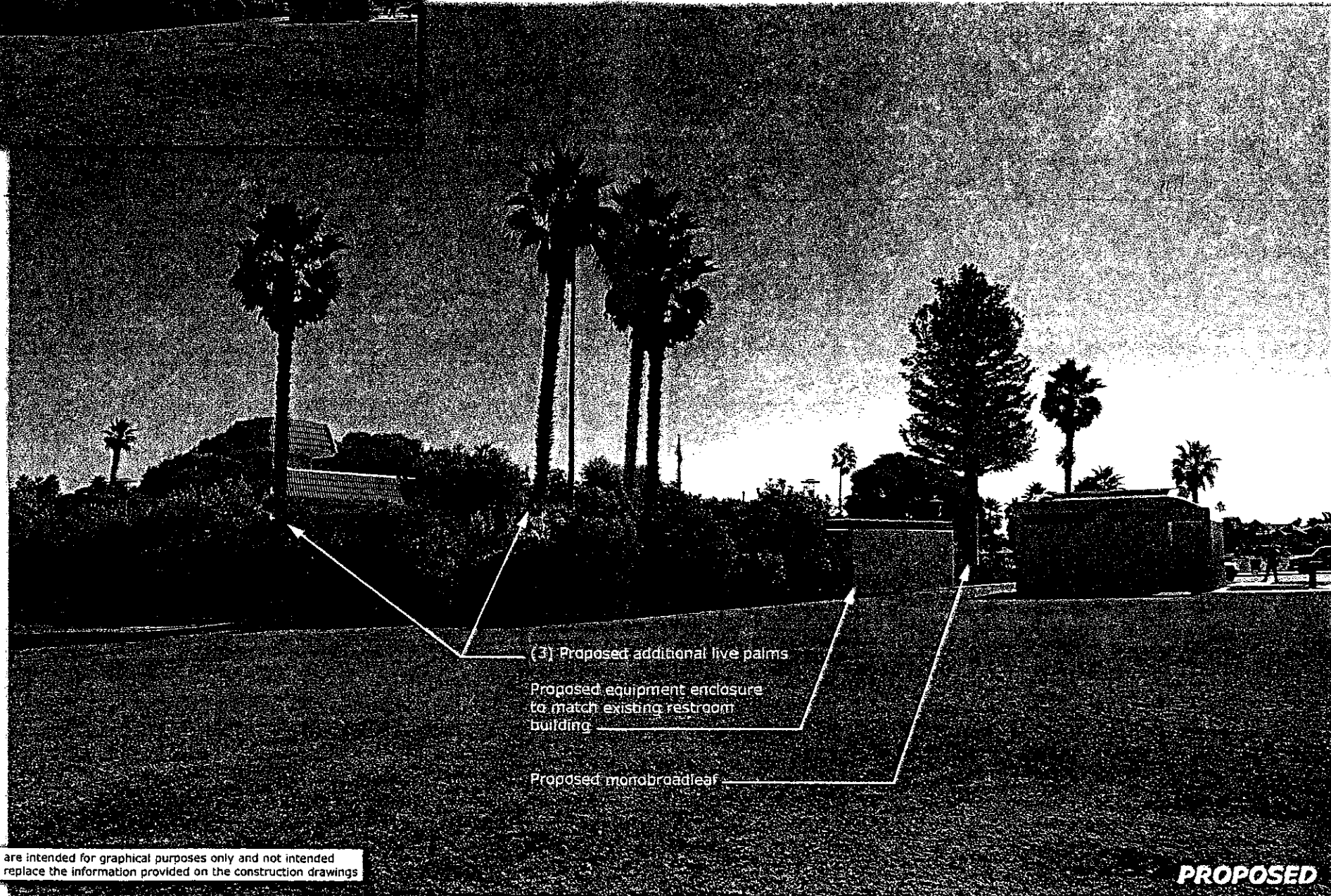
These simulations are intended for graphical purposes only and not intended to be part of or to replace the information provided on the construction drawings

8/6/2014

*Photosimulation of proposed telecommunications site*



SD0874  
Coronado Cays  
Park Relocation  
490 Coronado Cays Blvd. "A"  
Coronado, CA 92118



These simulations are intended for graphical purposes only and not intended to be part of or to replace the information provided on the construction drawings

8/6/2014

**PROPOSED**  
Photosimulation of proposed telecommunications site