

- SHORING DESIGNED TO SUPPORT DEAD LOAD OF EXISTING 8"-THICK CONCRETE ROOF SLAB ONLY. THERE SHALL BE NO LIVE LOAD ON ROOF DURING SHORING OPERATIONS.
- MONITOR ACCESS TO ROOF TO ENSURE LIVE LOAD LIMITS OUTLINED ABOVE ARE NOT EXCEEDED.
- STEEL BEAMS TO BE ASTM A572 GR. 50 OR A992, MIN. $F_y = 50$ KSI, UNLESS OTHERWISE NOTED.
- SCAFFOLD SHORING FRAMES TO BE SAFWAY SHORING FRAMES, WITH A MINIMUM ALLOWABLE LEG LOAD CAPACITY OF 11 KIPS WITH A 2 FACTOR OF SAFETY, AND SHALL BE INSTALLED AND BRACED IN COMPLETE ACCORDANCE WITH THE REQUIREMENTS OF THE MANUFACTURER.
- POST SHORES TO HAVE A MINIMUM ALLOWABLE LOAD RATING OF 7,000 LBS, INCLUDING A 3 FACTOR OF SAFETY, AND SHALL BE INSTALLED AND BRACED PER THE REQUIREMENTS OF THE MANUFACTURER.
- RIGHT-ANGLE CLAMPS SHALL HAVE A MINIMUM ALLOWABLE SLIP LOAD RATING OF 1,300 LBS AND A MINIMUM ALLOWABLE BREAK LOAD RATING OF 4,000 LBS, INCLUDING A 4 FACTOR OF SAFETY. CLAMPS MUST BE INSTALLED AND TORQUED PER THE REQUIREMENTS OF THE MANUFACTURER.
- SWIVEL CLAMPS SHALL HAVE A MINIMUM ALLOWABLE SLIP LOAD RATING OF 2,200 LBS AND A MINIMUM ALLOWABLE BREAK LOAD RATING OF 4,000 LBS, INCLUDING A 4 FACTOR OF SAFETY. CLAMPS MUST BE INSTALLED AND TORQUED PER THE REQUIREMENTS OF THE MANUFACTURER.

- NOTES:**
- SCAFFOLD TUBES FOR TUBE AND CLAMP BRACING SHALL BE MINIMUM 1.9" O.D. x 0.09"-THICK 50 KSI STEEL PIPE.
 - SHORING BEAMS TO BE CLAMPED TO U-HEADS AND TO EACH OTHER WITH A MINIMUM OF (2) C-CLAMPS AT EACH POINT OF INTERSECTION.
 - SCREW JACKS SHALL BE INSTALLED PER THE REQUIREMENTS OF THE MANUFACTURER AND INSTALLED TIGHT.
 - SHORING SCAFFOLD SHALL BE SET ON AN EVEN AND LEVEL CONCRETE BEARING SURFACE CAPABLE OF SUPPORTING SHORING LOADS, OR PROVIDE BEARING PADS DESIGNED TO SPREAD SHORING LOAD OVER ADEQUATE BEARING AREA.
 - ENSURE ALL SCAFFOLD TOWERS AND BEAMS ARE INSTALLED LEVEL AND PLUMB AND IN DIRECT LINE WITH SCAFFOLD LEGS AND TOWERS ON FLOORS ABOVE AND/OR BELOW.
 - TAKE SPECIAL CARE WHEN OPERATING EQUIPMENT ADJACENT TO SHORING TOWERS, TO ENSURE THEY ARE NOT IMPACTED AT ANY TIME.
 - ENSURE ALL SCAFFOLD TOWERS MEET A MINIMUM 3:1 HEIGHT TO BASE RATIO OR INSTALL OUTRIGGER SCAFFOLD AS NECESSARY.

- D.H. CHARLES ENGINEERING, INC. WILL NOT SUPERVISE, DIRECT, CONTROL OR HAVE AUTHORITY OVER OR BE RESPONSIBLE FOR CONTRACTOR'S MEANS, METHODS, TECHNIQUES, SEQUENCES OR PROCEDURES OF CONSTRUCTION, OR THE SAFETY PRECAUTIONS AND PROGRAMS INCIDENT THERETO, OR FOR ANY FAILURE OF CONTRACTOR TO COMPLY WITH LAWS AND REGULATIONS APPLICABLE TO THE FURNISHING OR PERFORMANCE OF WORK.
- SHORING SYSTEM DESIGNED TO TEMPORARILY SUPPORT VERTICAL LOADS ONLY, AND IS NOT INTENDED TO PROVIDE ANY LATERAL SUPPORT TO THE EXISTING BUILDING STRUCTURE.
- ADEQUACY OF EXISTING STRUCTURE TO UNDERGO SHORING OPERATIONS, AND TO BE SUPPORTED AT LOCATIONS SHOWN HAS NOT BEEN VERIFIED BY D.H. CHARLES ENGINEERING. BUILDING ENGINEER OF RECORD SHALL VERIFY THE ADEQUACY OF ALL EXISTING STRUCTURAL MEMBERS TO BE SUPPORTED AT THE LOCATIONS SHOWN, AND TO SUPPORT ANY LOADS IMPOSED UPON THEM BY SHORING OPERATIONS, PRIOR TO SYSTEM ERECTION.
- VERIFY THAT REQUIRED CLEARANCES ARE OBTAINED PRIOR TO COMMENCEMENT OF THE WORK.
- VERIFY THE ACCURACY OF ALL DIMENSIONS FOR BOTH EXISTING AND PROPOSED WORK.
- ADEQUATELY PROTECT ALL EXISTING PIPES AND EQUIPMENT DURING SHORING AND DEMOLITION OPERATIONS.

*PRELIMINARY DESIGN ONLY
NOT FOR CONSTRUCTION*

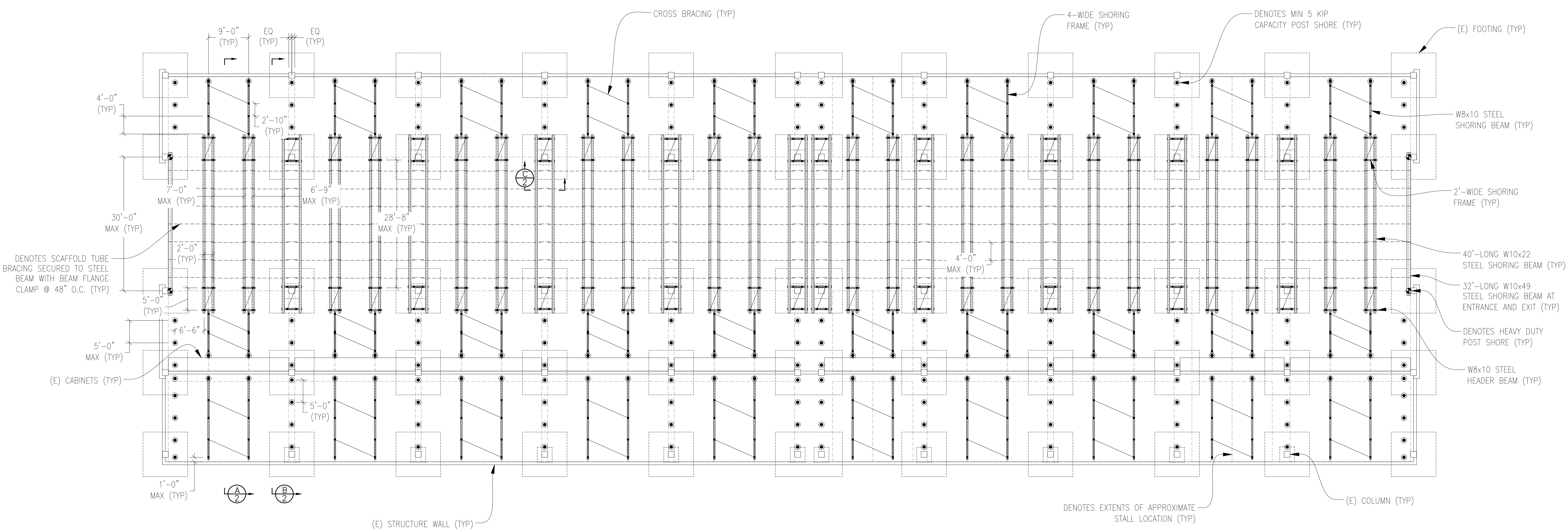
REVISIONS	
NO.	DATE

STRUCTURAL SHORING DESIGN
CORONADO CAYS
CORONADO, CA

ROCKLAND BUILDERS SERVICES, INC.
P.O. BOX 121356
CHULA VISTA, CA 91912
PHONE: (619) 592-9582

D.H.C.
D.H. CHARLES ENGINEERING, INC.
4706 Ikon Avenue
Santa Rosa, CA 95405
(707) 537-5232 www.charlesengineering.com

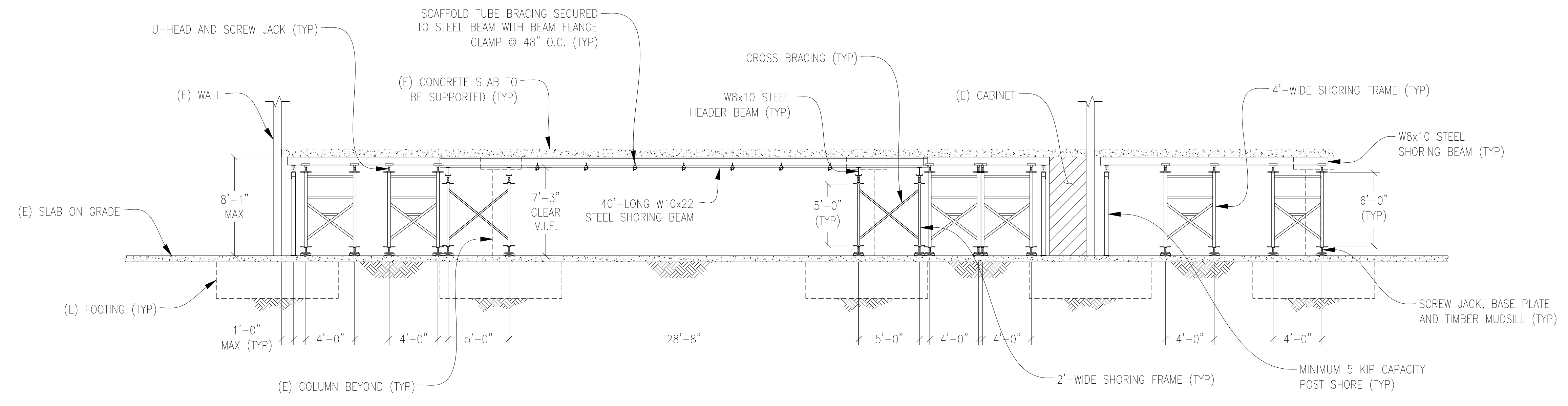
DATE:	12-2-21
DRAWN BY:	CDV
CHECKED BY:	MCP
SHEET	1 OF 2
DRAWING NO.:	21-1781A
REV	0



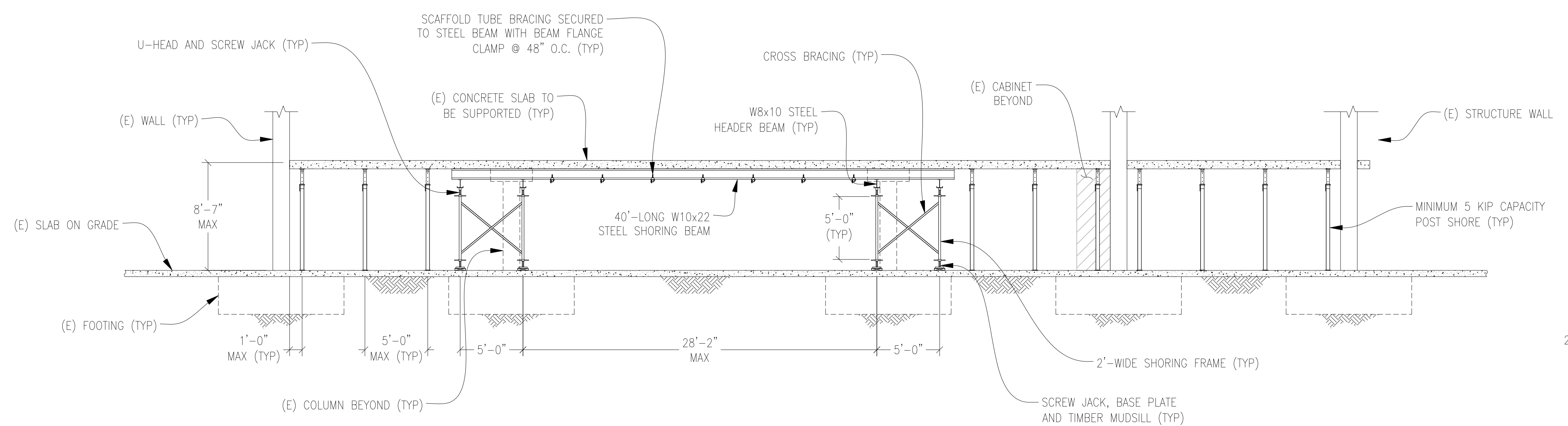
PLAN VIEW
SCALE: 3/32"=1'-0"

PRELIMINARY DESIGN ONLY
NOT FOR CONSTRUCTION

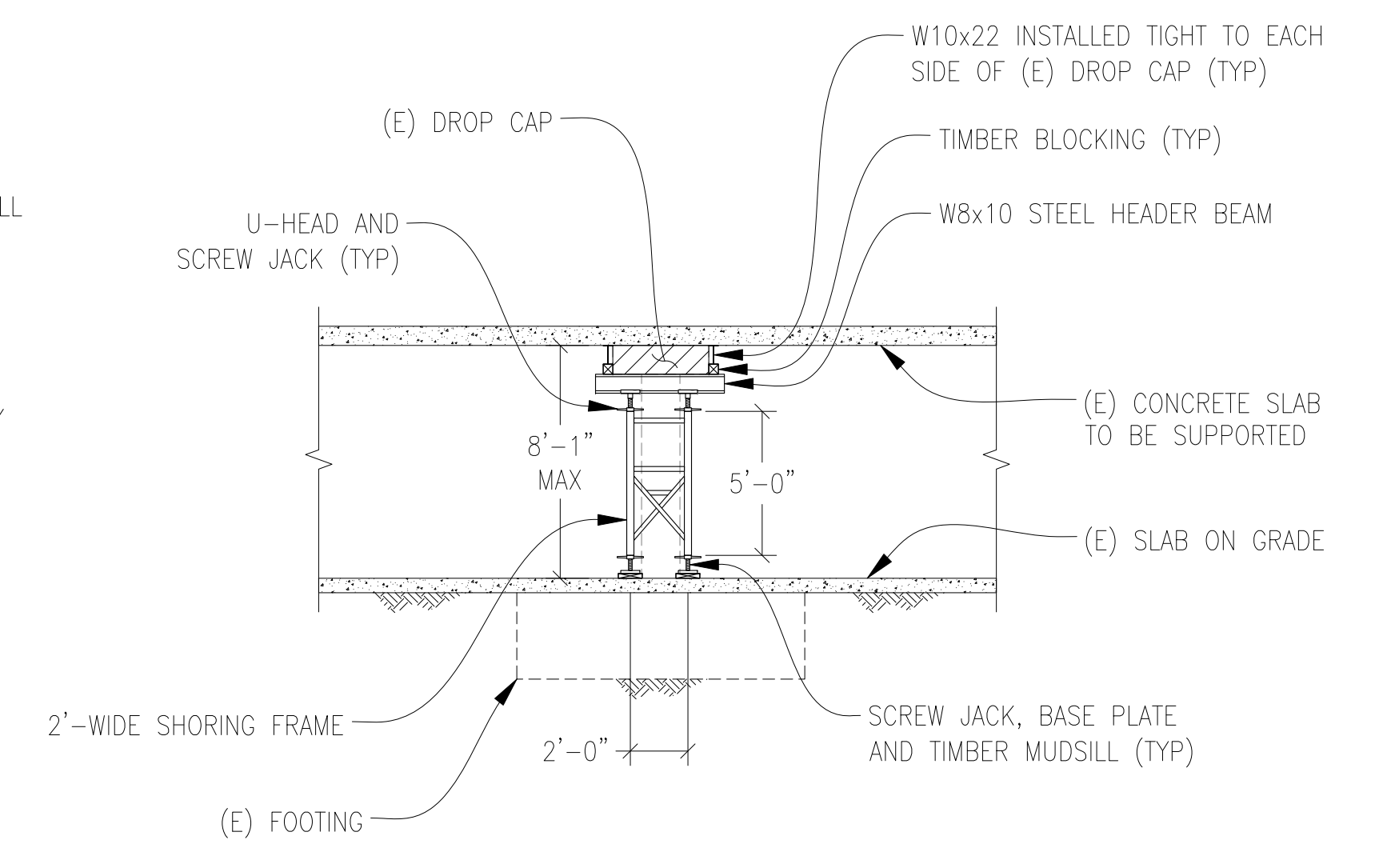
REVISIONS	
NO.	DATE



A SECTION
SCALE: 3/16"=1'-0"



B SECTION
SCALE: 3/16"=1'-0"



C SECTION
SCALE: 3/16"=1'-0"

STRUCTURAL SHORING DESIGN
CORONADO CAYS
CORONADO, CA

ROCKLAND BUILDERS SERVICES, INC.

P.O. BOX 121356
CHULA VISTA, CA 91912
PHONE: (619) 592-9582

DEIC
D.H. CHARLES ENGINEERING, INC.
4706 Ikon Avenue
Santa Rosa, CA 95405
(707) 537-5232 www.charlesengineering.com

DATE:	12-2-21
DRAWN BY:	CDV
CHECKED BY:	MCP
SHEET	2 OF 2
DRAWING NO.:	21-1781A
REV	0